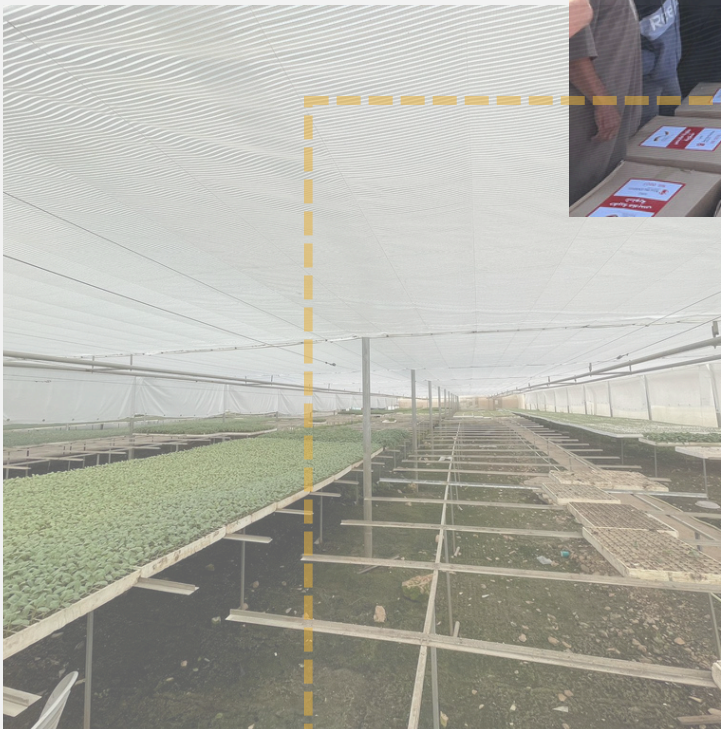




Agricultural Development Association (PARC)

PARC'S Quarterly Voice - 2025



March 2025

January

February

March

02-2963840
INFO@PAL-ARC.ORG

Introduction

The deterioration of environmental, social, and economic conditions in Palestine has severely impacted Palestinian communities. In light of these ongoing crises, strengthening rural communities has become essential. Sustainable initiatives and collective efforts are vital in enhancing community resilience and supporting rural development by offering innovative solutions to mitigate these impact.

One such initiative is the Rehabilitation of Al-Rahma Reservoir in Khan Younis, implemented by PARC, in partnership with CARE International and funded by the ECHO. This project aims to provide domestic water to hundreds of thousands of people in Gaza. It comes at critical time as Gaza faces devastating aggression by the Israeli military and seek to improve both living conditions and water security.

In this newsletter we highlight PARC's efforts to empower local communities through establish community protection committees (CPCs). These committees receive specialized training and lead impactful projects that have significantly improved living conditions in rural areas, such as western Dura.

We also celebrate the role of the social solidarity economy in empowering women, marking International Women's Day by recognizing the essential contribution of Palestinian women to community resilience and social development.



Each page offers stories of hope, resilience, and action – a statement to the power of community-led change and a shared vision for a more sustainable, justice, and empowered future

PARC INTERVENTIONS IN NORTHERN WEST BANK



01

Distribution of 1527 food parcels

02

Distribution of 70 food parcels to Gaza workers

03

Distribution of 750 blankets

04

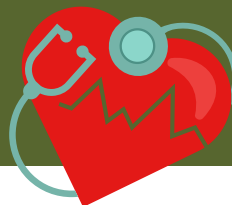
Distribution of 350 mattresses

05

Distribution of 800 fresh vegetable parcels



PARC INTERVENTION IN GAZA STRIP



692889 Cup

Distribution of drinking water

8040 Package

Hygiene kits

2610 Tent

Tents



4990 Item

Clothes

1154 Family

Supply of non-food items.



500 Tent

Tents

54447 Parcel

Food parcels

282106 Meal

Hot meals

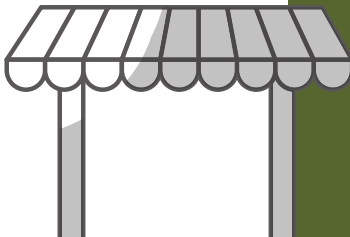
26000 Seedling

Distribution of seedlings



736 Session

Awareness and education sessions



Community Protection Committees (CPCs)



What are CPCs?

The Community Protection Committees (CPCs) are a voluntary group that promote citizenship and active participation. They address local challenges through sustainable solutions, leveraging local resources to strengthen resilience and preparedness. CPCs play a key role in strategic community planning and ensuring effective emergency response.

PARC Interventions in Western Rural Dura

As part of PARC's efforts to strengthen rural resilience, PARC established and activated Community Protection Committees (CPCs) in seven villages in the rural areas of Dura.

Through these interventions, over 56 community members – including youth, women, farmers, activists, and people with disabilities – were empowered by receiving specialized training in the following areas:



- Participatory Vulnerability and Capacity Assessment (PVCA)
- Vulnerability and Risk Assessment (VRA)
- Disaster Risk Reduction (DRR)
- Advocacy and Campaigning
- Civil Defense and First Aid
- Human Rights Documentation

In addition, targeted workshops and activities were held to further strengthen the capacity of CPC members, improving their ability to respond to crises and risks affecting their communities.

Outcomes: Strengthening Community Protection in Rural Dura

Following the completion of the CPCs' capacity-building program, a unified community protection plan was developed. This plan aims to: Identify, analyze, and document natural and human-made risks, including climate change threats. Integrate risk mitigation strategies into broader efforts to secure dignified livelihoods using available local resources



The plan addresses several key sectors, including:



Women's empowerment



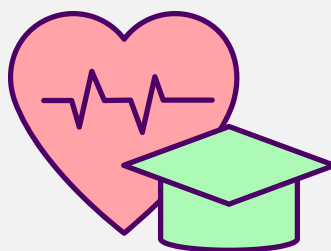
Infrastructure



Agriculture Sector



Youth engagement



Health and education services



Inclusion of people with disabilities

Defining Roles & Priorities: Toward Effective and Sustainable Implementation



- **Community Advocacy & Prioritization**

In a rural village facing daily challenges related to clean water, electricity, and infrastructure, Community Protection Committees-CPCs, in collaboration with PARC, identified key priorities and launched advocacy campaigns at both local and national levels to improve essential services.



Impactful Community Initiatives

CPC members went beyond advocacy- they implemented short-term community projects that directly addressed urgent needs. These initiatives resulted in safer roads, improved access to clean water, and better healthcare services, demonstrating the power of local action.

Building Resilient Communities



These efforts from part of a broader, long-term strategy to enhance rural resilience. Through integrated planning and proactive crises response, PARC continues to support communities in management risks and promoting sustainable development.

Rehabilitation of Al-Rahma Reservoir in Khan Yunis: Confronting Water Crisis



Amid the worsening humanitarian crisis in Gaza, access to safe domestic water has become a major daily struggle, particularly due to infrastructure damage caused by ongoing war on Gaza.

The Al-Rahma Reservoir in Khan Yunis, with a capacity of 5,000 cubic meters, was severely damaged, affecting water supply for over 200,000 people, including displaced families.



Strategic Emergency Response:

In response, PARC, in partnership with CARE International, implemented a project to rehabilitate the reservoir. This included repairing the concrete structure, restoring main pumps, electrical panels, and maintaining 750 KVA generators, as well as enhancing the wells and maintaining the pipeline to ensure sustainable water flow.

The project aims to alleviate the suffering of affected citizens by restoring access to safe water. It reflects the commitment to improve living conditions and strengthen community resilience amid one of the most challenging periods in Gaza's recent history.



Open Dialogue on Social Solidarity Economy



As part of the project "Promoting Gender Equality and Socioeconomic Empowerment in Rural Palestine (2023–2024)," PARC organized a dialogue on the social solidarity economy, with support from the City of Donostia (Spain) and in collaboration with ACPP.

The event brought together key stakeholders, including representatives from the Cooperative Work Agency, women's cooperatives, entrepreneurs, and civil society organizations. Discussions focused on critical issues such as women's economic empowerment, the role of cooperatives in sustainable development, and the challenges women face in the current economic environment. The dialogue aimed to foster collaboration and develop practical mechanisms to support and sustain this vital sector.



A total of 44 participants from cooperatives, civil society organizations, and official institutions took part in this engaging and impactful exchange.



CELEBRATING INTERNATIONAL WOMEN'S DAY

PARC celebrated International Women's Day by honoring the vital role of Palestinian women in all aspects of life. The event recognized their meaningful contributions to the PARC, with leadership expressing deep appreciation for their indispensable role.



Key speakers commended the resilience of Palestinian women, particularly in Gaza, and emphasized their central role in facing challenges. The event also spotlighted PARC's ongoing empowerment programs, noting that 35% of the organization's workforce is composed of women.

As part of its continued commitment to gender equality, PARC launched the #Voice_of_Change campaign—an initiative advocating for the economic and social empowerment of women in Palestine.

The celebration concluded with a tribute to female staff members, reaffirming PARC's dedication to supporting and uplifting Palestinian women, particularly in rural communities.

PARC and its partners continue their efforts to strengthen the resilience of rural communities and empower their members to face challenges and build a more sustainable future. Through effective cooperation and active participation, positive change becomes possible.

"Together, we build stronger and more resilient communities."

