



Palestinian Agricultural
Development Association
PARC

Annual Report
2024 



Table of Contents

Board of Director Remarks	3
Director-General Remarks	5
Who Are We?	7
Chapter 1: Analysis of general context: 2024- a Year of War	10
Economic impacts of the aggression on Palestinians in 2024	11
Social and humanitarian impacts of the aggression on the Palestinians in 2024:	13
Impacts of the aggression on the agricultural, environmental and food security sector	14
Chapter 2: Executive Summary of	16
Chapter 3: Most significant achievements in 2024 according as per the strategic plan	24
Achieving sustainable management of natural resources	24
Improving standard of living (creating job opportunities and alleviating poverty)	29
Strengthening steadfastness, emergency response and alleviating and adapting to climate change	37
Enhancing immunity	52
Bolstering PARC's role in leading mobilization and influence	59
Chapter 4: PARC's partners in development	66
Al Reef Company for Agricultural Investment and Marketing	66
Reef Company for small funding services, 2024	69
Conclusion and Recommendations	71

Board of Directors Remarks

The year 2024 was the deadliest for the Palestinian people and the most dangerous to its national cause since the Nakba. Throughout the year, Israeli occupation forces continued their genocidal war on the Palestinian people in the Gaza Strip, in tandem with escalating its systematic crimes in the West Bank, especially in the northern governorates. This resulted in extremely adverse consequences for all sectors in the country, imposing new challenges on official, civil and private institutions, which will last for many years to come.



In the Gaza Strip, Israel has not hidden its objectives of rendering the Strip unlivable by destroying the infrastructure and civilian properties, going full-force in the collective slaughter of Palestinian civilians and starving and thirsting them to death. Another objective of the war has been attempts to expel the residents of Gaza outside of the Strip. The new US administration gave the green light to the Israeli government, calling for the emptying of Gaza, under the pretext of rebuilding it as part of its expulsion policy. However, the legendary steadfastness of the people of Gaza has derailed these plans.

Throughout this year, the international community has once again proven its inability to apply international humanitarian law and international human rights law in the occupied Palestinian territory, leaving the Palestinian people alone to face their fate. This community, represented in its official institutions, has actually refuted the very principles it has endorsed for decades. We have seen the positions of several countries regarding the ICC's decision to issue arrest warrants against the Israeli Prime Minister and his former Defense Minister as one example. What's more, the US administration is a direct accomplice in this war on the Palestinian people, imposing sanctions on the aforementioned Court and its prosecutor-general, instead of carrying out its rulings. In this context, the UN has also failed to honor its charter in the occupied Palestinian territory, even in defending its own institutions working in Palestine, namely UN-RWA, whose operations were suspended by an Israeli government decision.



These developments imposed considerable challenges to PARC, which continued to offer help to those in need. Its urgent and quick intervention, extensive experience and transparency, had a tremendously positive impact on Palestinian society and among partner organizations and funders. Furthermore, given its boldness, credibility and initiatives to help the afflicted by providing food, water, means of shelter and restarting water wells, among others, meant that many institutions approached PARC to work together in its humanitarian relief programs.

PARC's increased efforts to carry out emergency humanitarian relief programs did not hinder it from continuing to implement its projects for this year. On the contrary, PARC continued to carry out its land reform projects, open agricultural roads, plant saplings, establish drinking water networks in marginalized areas, water purification plants and irrigation networks in farmland. It also formed community protection committees and supported small entrepreneurial projects, in addition to supporting the cooperatives and women's empowerment sector. These projects aim not only to reinforce the steadfastness of Palestinian farmers on their land, but also to achieve the goal of developing the agricultural sector and sustainable development.

As PARC ends this year and prepares to begin 2025 with a new strategy for the coming years, taking into consideration the different variables and changes, it moves forward with confident and calculated steps towards the future, based on an experience spanning four decades of civic work, mainly in supporting the agricultural sector in Palestine.

The Board of Directors, which has closely followed the activities of the executive administration, employees and volunteers, who worked day and night to provide creative solutions in these extremely complex circumstances, was their partner in the field, side by side, to show appreciation for their efforts and work. The BoD also thanks our partners and friends, who lent us a hand in supporting our programs, both in the West Bank and Gaza Strip.

Finally, we pay homage to our martyrs, pray for our just, national and humanitarian cause, wish a speedy recovery for the wounded, freedom for our prisoners and the return of the displaced to their homes.

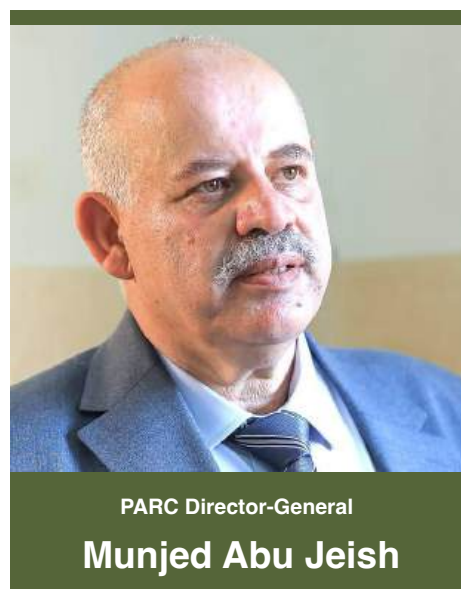
Head of the Board of Directors,

Eng. Salam Al Zagha



Director-General Remarks

The year 2024 represented a milestone for PARC, which continued its role as an active civil society institution within an extremely complicated national context. During this year, the widespread Israeli aggression on the Gaza Strip and West Bank continued, accompanied by grave violations of international humanitarian law and international human rights law, in addition to the systematic destruction of infrastructure, including the agricultural sector and sources of livelihood.



In the face of this deteriorating humanitarian reality, PARC continued its emergency and develop interventions in parallel, focusing on a holistic approach that integrates urgent relief with support for the steadfastness of local communities and enhancing their adaptive capacity. Response to growing needs in the Gaza Strip and northern West Bank was intensified and the scope of humanitarian interventions expanded to include the distribution of food and urgent aid and to provide production tools for the most vulnerable sectors.

At the same time, PARC continued its strategic programs to develop agricultural infrastructure and protect and develop natural resources as fundamental components for achieving food sovereignty and promoting sustainable development in rural areas. It also worked towards empowering local communities, especially women and youth, to invest in the agricultural sector, to guarantee increase in productivity and promote decent work opportunities.

This year, PARC launched several solidarity and media campaigns, particularly “Save Gaza” and “Think of Gaza”, both aimed at mobilizing resources, enhancing national solidarity and deepening citizens’ confidence in effective national institutions. These campaigns also contributed to expanding the scope of community partnership and revitalizing the role of grassroots and civil society organizations in historic Palestine, to promote a unified Palestinian position towards humanitarian and rights issues.



At the institutional level, PARC continued to develop its bylaws, especially in the areas of governance, resource management and procurement, in line with standards of transparency, efficiency and integrity. Furthermore, this year also saw the expansion of PARC's partner base with donors and international institutions, in addition to an increase in the number of employees, which reflects development in PARC's institutional structure and ability to expand the scope of its interventions.

One of the most significant achievements this year was the establishment of the Jifklik Community Center in the Jordan Valley region, as a qualitative initiative to promote the steadfastness of marginalized communities and providing a safe space for community organizing and development services in an area, which faces the threat of displacement and annexation. The achievements of 2024 reflect PARC's commitment to the values of social justice, empowerment and human dignity and reinforce our deep faith that professional and organized civil action is the cornerstone for defending the Palestinian people's rights, reinforcing their steadfastness and building a more just and sustainable future.

PARC Director-General
Munjed Abu Jeish



Who are we?

Palestinian Agricultural Development Association – PARC

The Palestinian Agricultural Development Association – PARC, is a nonprofit pioneer Palestinian institution primarily dedicated to developing the agricultural sector in the West Bank and Gaza Strip, in order to regain its role as a main contributor to the national economy and to enable the Palestinian people’s sovereignty and management over their national resources. It also aims to reinforce the people’s steadfastness and achieve food security, especially in the most marginalized rural areas. PARC was established by volunteers from the Palestinian volunteer movement in 1983. Since then, it has worked hard to fulfill its vision and strategic objectives, accomplishing unparalleled accomplishments that have turned it into one of the most popular Palestinian civil society institutions in the field of agricultural development, food security and social and economic empowerment.

Our Vision

A pioneer institution with a national identity and regional approach, committed to urban and agricultural issues, national liberation and social justice.

Our Mission

We are a national, development-based institution engaged in the development of the agricultural sector, in strengthening farmers’ steadfastness, in reaching poor and marginalized sectors and in mobilizing and developing the potentials of rural populations to enable them to control their resources. We accomplish this through our unique team and volunteers committed to their society, within entrepreneurial programs and modern and transparent administrative and practices towards building a free and democratic Palestinian society governed by values of social justice.

Development Goal

To create a strong Palestinian countryside fortified by its agricultural sectors and reinforced with sovereignty.



Regulatory Values

Continuous self-learning

Accountability and effectiveness

Justice based in rights and non-discrimination

Transparency

Renewal and innovation

Volunteering

Acceptance of the other and mutual respect

Community partnership

Our address

West Bank, Shufat, Jerusalem

P.O. Box 25128, Shufat, Jerusalem

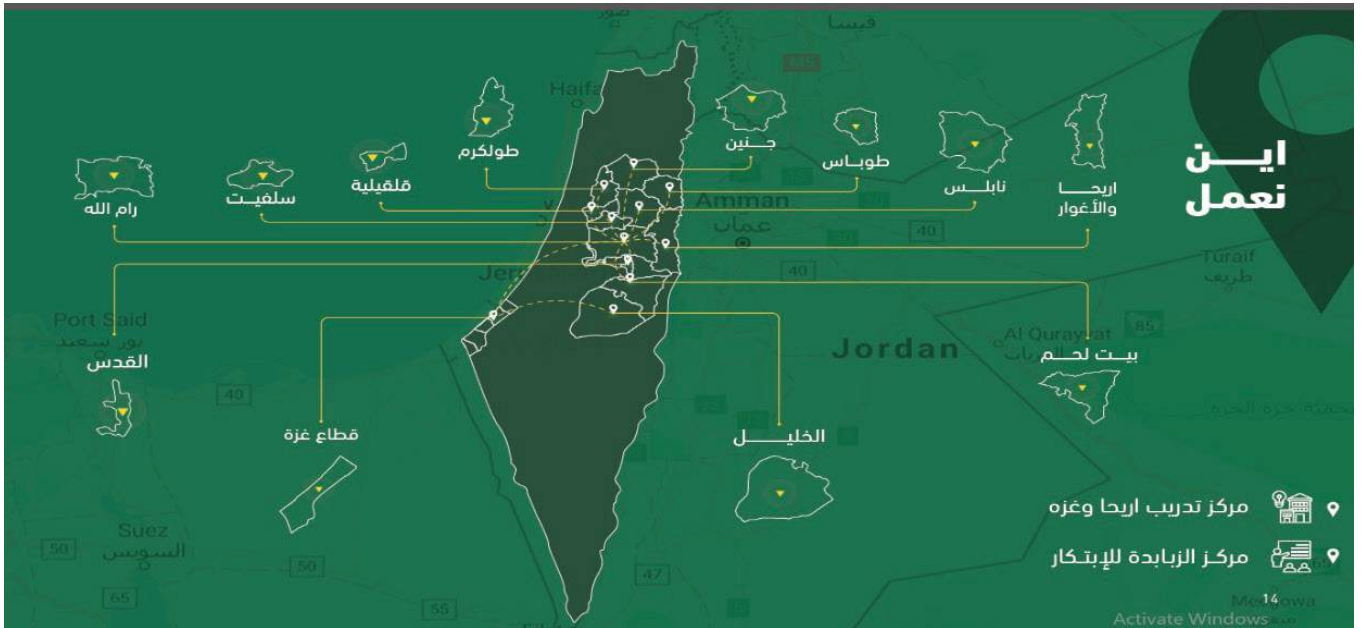
Branch		
Main headquarters- Ramallah	022963841 / 022963840	022963850
Gaza office – Deir Al Balah	0599366038	
Jerusalem office	025833818	025831898
Ramallah office	0598904495	
Nablus office	0595991224	
Salfeet office	0597404173	
Jordan Valley office	0592961705	
Hebron office	0599879615	
Tulkarm office	0592770024	
Bethlehem office	0598921741	
Qalqilya – Azzoun office	0598921705	
Jenin office – Zababdeh Center	0598921708	
Jericho office – Agricultural engineers training center	022327296	022327298

info@pal-arc.org

www.pal-arc.org



Where do we work?



CHAPTER ONE



Analysis of general context: 2024- a Year of War

2024 was a year of ongoing war, with no pause or truce, during which Palestinians witnessed horrific events. The Israeli occupation deliberately continued to systematically kill and destroy, to create and spread famine and commit massacres, expulsion and forced displacement of Palestinians in the Gaza Strip. Since the ongoing war on the Gaza Strip, for over 15 months, Israeli occupation forces have killed over 50,000 Palestinian citizens, including over 6,000 unidentified bodies, according to the Gaza Ministry of Health, in addition to over 10,000 missing persons believed to be trapped under the rubble. Even more disheartening is that the estimates are much higher than the figures declared by official parties. According to “The Lancet”, in an investigative report published at the end of July, 2024, the number of victims is estimated at 7% of the total population of 2,75,259 in the Gaza Strip.

Due to the systematic destruction of the infrastructure and vital facilities, the Gaza Strip is buried under millions of tons of rubble and debris. Preliminary estimates indicate to over 42 million tons of rubble have accumulated, in addition to hundreds of tons of toxic materials from bombs and weapons used during the aggression on Gaza. Moreover, more than 80% of schools and universities have been targeted and destroyed, resulting in children not attending school for the first time since the Nakba.

In tandem with the aggression on the Gaza Strip, Israeli occupation and settler attacks and violations in the West Bank escalated. In 2024, Israeli forces and settlers killed 512 Palestinians, including 43 who died in Israeli prison, while 2,900 were injured. Israeli force waged military operations in the West Bank including incursions and airstrikes, mostly in northern areas and especially in camps, whose infrastructure was systematically destroyed and which damaged all vital sectors in the camps including homes, streets, stores and electric, water and sewage networks.



Furthermore, the West Bank witnessed a major escalation in land confiscation for settlement projects. Over 52,000 dunams of Palestinian land were confiscated and over 12 buffer zones established around settlements. Also, 11 settlement outposts were legalized, increasing their number to 95 outposts overall, over an area of approximately 412,000 dunams, in addition to the 190 already existing settlements in which around 740,000 settlements live. Meanwhile, 28 Bedouin communities were displaced from various areas of the West Bank.

Israel deliberately increased violations against Palestinians overall and farmers in particular, closing 955 roads and entrances to Palestinian cities and villages, including with 76 new iron gates and cement blocks. It also deprived farmers from accessing their land, especially during farming seasons. Israeli troops and settlers destroyed and uprooted over 59,163 trees throughout the year. As part of its 16th annual campaign to support farmers during the olive harvest, PARC documented 1,339 destroyed olive trees, 54 attacks on farmers during the olive harvest, including 20 physical attacks, eight assaults involving the confiscation of olives and 26 assaults involving settlers stealing the picked olives and equipment during the harvest. This exacerbated the already complicated economic situation for farmers due to their denial of access to their source of livelihood.

The economic impacts of the aggression on the Palestinians in 2024

As a result of the ongoing aggression on the Gaza Strip and West Bank, the Palestinian economy witnessed a sharp decline in its production base and an unprecedented increase in poverty, unemployment and marginalization rates. At the end of the year, according to the Palestinian Central Bureau of Statistics, an unprecedented and sharp downturn continued in the Gaza Strip's GNP by over 82%, in tandem with a rise in unemployment rates to 80%. This decline also included the West Bank, by over 19%, with a rise in the unemployment rate to 35%. In conclusion, this led to a Palestinian economy setback of 28% accompanied by a rise in the unemployment rate to 51%.

Most economic activities in Palestine suffered a setback compared to 2023. Construction activity recorded its highest setback rate of 46% (38% in the West Bank and 98% in the Gaza Strip) at a sum of US\$332 million. This was followed by industrial activity, which declined by 32% (17% in the West Bank and 91% in the Gaza Strip) at a sum of \$564 million. Services activities declined by 27% (17% in the West Bank and 81% in the Gaza Strip) at a sum of \$6,453.



Prior to Israel's aggression on the Gaza Strip, unemployment rates exceeded 36%, with the poverty line in Palestine at approximately ILS2,717, while the extreme poverty line was around ILS2,170. Following the ongoing aggression on the Gaza Strip, it is safe to say that we have surpassed the concept of poverty and are now talking about various levels of famine and food insecurity. The overall consumption rate dropped by 24% (around 13% in the West Bank and 80% in the Gaza Strip), reflecting the direct impact on the standard of living of individuals in Palestine. This coincided with a rise in unemployment rates, whereby most individuals in Gaza suffer from elevated levels of food insecurity.

The increase in unemployment and poverty rates was accompanied by an unprecedented hike in prices as a result of the acute shortage of goods and services in the Gaza Strip due to the suffocating blockade. This had repercussions on the West Bank as well. While Gaza saw an increase of 227% in prices, consumers in the West Bank were met with a hike in prices of around 3%, which resulted in a drop in purchasing power among Palestinians of 33% - 70% in the Gaza Strip and 3% in the West Bank.

The continued restrictions throughout 2024 have made the crisis even worse for Palestinians. With poverty and unemployment rates doubling due to the Israeli aggression and destruction of vital sectors of the Palestinian economy, in addition to the suffocating restrictions on the movement of commodities and goods and the tightened siege on crossings, it is expected that this crisis will have consequences and repercussions on the Palestinian economy. These include tightened economic restrictions and increased rates of Palestinians living under the poverty line, which portends an imminent economic collapse of all sectors, especially in the West Bank, as a result of the collapse in the Gaza Strip.

At best, the expected scenarios for the Palestinian economy, with modest and marginal growth rates, will have no impact on the structure of the local economy. This is due to factors such as the severe contraction of multiple economic sectors, the rise in transportation and insurance costs as a result of regional events since October 2023, and the continuation of low levels of direct aid. Addressing unemployment and poverty rates will remain among the greatest challenges facing Palestinians and their institutions, whether official bodies, civil society organizations, or the private sector, in the coming years.



Social and humanitarian impacts of the aggression on the Palestinians in 2024:

As a result of the devastating impact of the aggression on the Gaza Strip and the systematic attacks on homes and neighborhoods, losses are not only limited to the destruction of physical structures; they also represent a form of erasing the memory of the places to which people belong. This is happening amid ongoing repeated displacement as the Israeli aggression continues, with UN reports indicating that the number of displaced persons has risen to 2 million, representing over 95% of Gaza's population who have been forced to leave their homes. PARC's report, prepared in cooperation with the Danish Refugee Council, stated that the number of times Gaza residents were displaced reached up to 19 times, and at lowest, six times, depending on the short-notice warnings issued by Israeli occupation forces. The report also highlighted the catastrophic conditions in displacement camps and shelters, due to a severe shortage of basic necessities, lack of essential infrastructure, insufficient tents, and extreme overcrowding due to the large number of people who were continuously and repeatedly displaced throughout the year.

Furthermore, the social impacts were also evident in the level of internal tensions inside displacement camps due to the overcrowding and lack of available resources, which created new internal conflict over competing for resources, threatening the prevailing social fabric. Additionally, multiple divisions arose on the basis of geographic location, gender and political affiliations. Also, there was a change in the social role of family members in the Gaza Strip, whereby most members dedicate their time to searching for basic services, whether food, water, shelter or others, to secure the minimum standards of living. This is in addition to the imbalance of the democratic makeup of the Strip's population and the loss of the family's main breadwinner or other members, which puts an additional burden on other sectors to shoulder the responsibility of the family, such as women and children.

The human suffering in places of displacement is evident in the lack of privacy for individuals and families, with overcrowding in these places and people being deprived of their most fundamental right to access basic services and securing the necessary privacy for individuals in places of displacement. This resulted in signs of severe depression among the people throughout their period of displacement in addition to a rise in mental and psychological disorders due to repeated traumas and lack of security and safety.

In the West Bank, the separation and isolation of Palestinian cities and villages from each other by restricting Palestinian freedom of movement, led to more social divisions between sectors of the population. West Bank areas became cantons separated by checkpoints and iron gates. This reflected on social integration and communication between the various regions, in addition to other



factors that resulted in social tensions due to the rise in unemployment rates. This was accompanied by Israeli occupation authorities barring hundreds of thousands of Palestinian laborers from working in the Israeli market, thereby compounding hardships due to the increase in poverty and extreme poverty levels. In addition, there was a lack of necessary resources, evidently clear in the differences in social and living standards between various Palestinian social components.

Impacts of the aggression on the agricultural, environmental and food security sector

Throughout the Israeli aggression on the Gaza Strip, the agricultural sector endured unprecedented and systematic destruction, including the leveling of land, agricultural spaces, the infrastructure, production inputs, supply chains and food industries. According to a report by the Palestinian Ministry of Agriculture, one year into the aggression, initial losses were estimated, at approximately US\$1 billion. The northern Gaza Strip is considered the hardest hit among all of Gaza's districts, followed by Khan Younis district, with an estimated 68% damages to agricultural land, which covers an area of 150,000 dunams. The aggression caused major damage to orchards and other trees, including olive trees, which fall under this category. The damages are estimated at around 75% of the overall number of planted olive trees. In addition, field and seasonal crop production was disrupted as farmers were unable to access their lands throughout the aggression.

Water wells were also destroyed. Around 1,118 agricultural wells, or 52% of the overall number of wells in Gaza, were destroyed. As for greenhouses, overall damages affected around 5,779 dunams, or 44% of all greenhouses. As for the animal production sector, which comprises 46% of agricultural products, including meat, hunting and fisheries, this sector was badly damaged, with over 95% of cattle perishing and all of the calves slaughtered. Production in this sector was limited to families and households for living purposes only. Moreover, the decline in food security rates among citizens in the Gaza Strip led to the consumption of anything available in the animal production market, as a result of the blockade and tight restriction on the entry of goods.

The direct targeting of the fishing sector contributed to the complete halt of production due to the restriction imposed on fishermen, which prevented them from entering the sea and practicing their trade. The fishing sector provides jobs for around 4,264 fishermen, half of whom are in northern Gaza. A PARC report indicates that an initial inspection of damages in Gaza City alone, showed that 98% of the fishing sector was destroyed, including the destruction of the Gaza port and over 900 fishing boats of various sizes, which were directly bombed. In the cities of Deir Al Balah and



Rafah, over 70% of the fishing sector was destroyed with the destruction of over 600 boats. It should be noted that the fishing sector constitutes the second largest source of production in Gaza. In normal times, its annual estimated production is between 3,000 to 4,000 tons of fish in addition to 300-500 tons of farmed fish.

Throughout 2024, the West Bank saw increased violence against farmers and their properties due to settler and Israeli army violations, including the systematic destruction of farmlands, land bulldozing, crop theft, physical assault and terrorization of farmers in a bid to chase them off their land and prevent them from accessing it. A PARC factsheet documenting violations against farmers indicates that farmers were subject to over 333 attacks by settlers while they were working in their land. Furthermore, over 699 trees, mostly olive trees, were uprooted and destroyed, with the Ramallah/ Al Bireh governorate the hardest hit by settler attacks during the olive harvest.

The agricultural sector in Palestine is closely linked to the enhancement of food security. Palestinians have long strived to control their own resources, which reinforces the issue of food security and achieves sovereignty over food for them. Interest in this matter increased, especially since Palestinians have been subjected to starvation policies during Israel's aggression on the Gaza Strip. It should be pointed out that the use of hunger as a weapon against civilians in a time of war is considered a flagrant violation of international treaties and conventions, especially Additional Protocol II to the 1949 Geneva Conventions, which prohibits the use of hunger, or which leads to policies of starvation as a means of starving civilians and depriving them of their basic needs. International humanitarian law stresses on the need to protect civilians and their properties during times of war.

According to an international report on the Integrated Food Security Phase Classification (IPC), approximately 96% of the population of the Gaza Strip is facing elevated levels of acute food insecurity. The highest rates were in northern Gaza districts as a result of the ongoing bombardment and displacement of residents in addition to the direct targeting of civilians properties and farmland, which provided them with 60% of the market's food needs.



Chapter 2



Executive Summary of PARC interventions in 2024

Throughout this year, PARC faced huge challenges in its work, such as difficulty in access to communities where it provides services, especially in the Gaza Strip. Still, it strove to maintain its developmental and empowerment approaches for individuals and community-based institutions, which were greatly impacted by the war. In response to this fast-changing reality, PARC was forced to shift some of the interventions in its strategic plan into an emergency plan in line with the rapid transformations of the nature of community needs due to the devastating impact of the war on all vital sectors. It shifted some of its work and programs towards emergency response for basic needs, targeting widespread sectors of the Gaza population, through humanitarian aid programs.

During the war on the Gaza Strip, PARC succeeded in enhancing the flexibility of its interventions to coincide with the needs of citizens affected by the war. It provided food, drinking water and shelter tents in the most affected and dangerous areas. It should be noted that PARC continued to operate in the north of Gaza, which endured continuous and intensive Israeli military operations, which paralyzed all aspects of life for the Palestinians, who insisted on remaining in these areas.

As a result of the widespread destruction to the civilian infrastructure of all sectors and the displacement of Gaza's population from their homes, PARC tracked the most basic needs of the population, first and foremost tents for the displaced, food and non-food items, cleaning materials, clothes, desalination stations and energy by providing solar panels and waste and sewage management, among other needs throughout areas of Gaza. It also carried out interventions that reinforced the steadfastness of displaced communities through permanently providing them with basic needs such as energy and water for some camps. This rendered the camps more sustainable and stable.



PARC succeeded in establishing a community center for community services in the city of Khan Younis, to provide various basic services to residents of the displacement camps. These included aid to meet their basic needs, social services for women and children, by offering psychosocial support in times of war, in addition to legal and educational services, which were disrupted after educational and development institutions were targeted in Gaza. The center was considered a platform for launching the work of all CSO's in the Gaza Strip, providing them with office space for their teams, so they could be able to continue providing their services to displaced people in areas determined as humanitarian zones during the war.

With the aim of strengthening solidarity among all components of the Palestinian people everywhere, PARC expanded on its campaigns to support citizens in the Gaza Strip. Among the most notable of these was the "Think of Gaza" campaign, which had the greatest impact in strengthening bonds of solidarity and mutual support among Palestinians, especially Palestinians inside the 1948 territories. Through this campaign, PARC received in-kind and financial donations to bolster its relief capacities in Gaza, enabling it to provide aid services to a total of 530,000 people.

This campaign is considered one of the initiatives that allowed PARC to respond to the needs of Palestinians in Gaza in a flexible and swift manner. It also played a role in fostering solidarity and networking with grassroots and institutional frameworks among Palestinians inside the '48 territories, which in turn contributes to strengthening local and popular funding and enhancing trust in national institutions in meeting citizens' needs. The campaign included activities aimed at supporting and assisting citizens in Gaza, such as distributing potable water, food parcels, bread, meals, clothes and repairing sewage networks, all in an effort to alleviate the suffering of residents caused by the ongoing aggression against the Gaza Strip since 2023.

In the context of bolstering emergency interventions in the Gaza Strip, PARC strengthened its strategic partnership with WFP to access the largest number of beneficiaries. Through this partnership, PARC was able to reach 91,314 beneficiaries in its distribution process of food parcels, flour bags and direct cash assistance.

In the West Bank, in light of Israel's ongoing arbitrary measures, including raids on residential areas, closure of roads and restriction of movement between districts and cities, in addition to assaults on citizens and farmers, preventing them from accessing their land and livelihoods and continued and



heightened settler attacks, PARC continued to carry out its interventions at the various levels. The goal was to reinforce the steadfastness and resilience of Palestinian society, especially in areas most affected by Israeli occupation restrictions and measures.

Here, PARC was able to provide assistance and emergency response to citizens living in the following camps: Nur Shams, Tulkarm, Jenin, and Al Far'a, through close cooperation with service committees there. It also provided assistance to affected areas in the Jenin district, in the northern West Bank and Masafer Yatta to the south, including support for 150 beneficiaries of livestock projects in Masafer Yatta.

In this year, PARC continued to implement its basic programs aimed at improving the level of services provided to citizens through contributing to the improvement of the infrastructure necessary for developing the agricultural sector in Palestine. These included opening agricultural roads to allow farmers to access their lands and properties, which is their right, promoting investment in them. PARC also worked on improving the infrastructure in various communities and providing them with water lines, greenhouses and the necessary agricultural equipment.

PARC dedicated its accumulated expertise over the past 41 years in improving production levels of some agricultural sectors through providing farmers with improved inputs and the necessary agricultural expertise to increase productivity. It also supports small and medium agricultural businesses with modern agricultural technologies to raise productivity levels of these businesses. In turn, this increases the number of workers in agricultural facilities, which contributed to the absorption of more workers and therefore decreased the high unemployment levels among Palestinians. There were 647 youth and women beneficiaries targeted this year. PARC also supported and built 22 cooperatives, reformed 150.3 dunams of agricultural land and created 415 job opportunities.

PARC continued to provide a motivating environment that promotes the shift toward a green and circular economy to protect and preserve the environment, in order to mitigate the accelerating impacts of climate change in Palestine. This was achieved by empowering a number of individuals working in the agricultural sector and/or those interested in investing in it, particularly youth and women, through grants for agricultural projects that generate competitiveness and encourage the development of pioneering, technology-based agricultural initiatives that incorporate new knowledge and investments to increase the sector's productivity and diversify its crops. These grants also contributed to



the emergence of innovative and entrepreneurial agricultural businesses, including the use of modern farming technologies while adhering to the principles of green, circular, cooperative, and solidarity-based economies, which can maximize economic benefits for local communities.

To complete the design of interventions based on the integration of essential dimensions, whether financial, skills or knowledge, necessary for capacity-building among those working in the agricultural sector, PARC continued its capacity-building efforts by providing beneficiaries with specialized training in establishing agricultural businesses, as well as equipping them with expertise and best practices in the sector. The program targeted agricultural project owners, particularly youth and women, through well-equipped training centers at PARC's branches, including the training center in Jericho and the training center in Jenin. This enabled beneficiaries to acquire the necessary knowledge and skills by focusing on practical application and hands-on experience. It also allowed PARC teams to effectively assess the trainees' capabilities, their level of benefit from the training, and their ability to develop their agricultural projects.

In addition to its interest in empowering the Palestinian farmer, PARC focused on establishing community-service centers such as the citizen center in Khan Younis, in the southern Gaza Strip, from which 70,065 citizens benefited. There was also the community center in Jiftlik, which was equipped with all the necessary equipment, devices and offices to serve Palestinian rural communities throughout the Jordan Valley. The objective behind this center was to provide a suitable space for local and international organizations to direct their interventions in at-risk and marginalized areas in the Jordan Valley. It also aimed to shed light on the importance of the Jordan Valley and its productive value for the agricultural sector in terms of enhancing food security among Palestinians and in helping to halt Israeli policies aimed at annexing the Jordan Valley, even while these measures are considered a blatant and clear violation of international humanitarian law and international conventions pertaining to the occupied territories.

In line with PARC's mission and strategic objectives, particularly those aimed at developing Palestinian rural communities and enhancing their agricultural production capacity, PARC seeks to strengthen resilience and steadfastness in the face of political, economic, and environmental challenges.

To this end, in coordination and cooperation with local communities across the Palestinian countryside, PARC undertook efforts to raise awareness about the significance of the agricultural sector. It also highlighted the importance of adopting national policies that establish a regulatory framework to safeguard



the sector, its activities, and those who work within it. It established 12 community initiatives at a cost of €67,600 in addition to the importance of developing national policies pertaining to marketing and the protection of farmers' rights. It held 122 training workshops and price control to maintain a balance between agricultural production costs and the consumers' purchasing power in the Palestinian market, which is one of the biggest challenges due to the absence of actual national policies that serve farmers and the agricultural sector as a whole. To preserve the dynamics and social movement within rural and agricultural communities, PARC focused on capacity-building for community protection committees. It also worked to attract new youth and women volunteers to enhance social integration and strengthen leadership roles. These efforts aimed to defend social, economic, and political rights and to promote participation at the decision-making level. Community protection committees were established in 78 villages and communities in the West Bank and Gaza Strip. Throughout the year, committee members were targeted in training programs on how to deal with natural, environmental and manmade dangers to minimize the impacts of these risks through addressing their sources and alleviating their impact on communities. PARC also supported around 61 entrepreneurial projects, 18 of which were earmarked for women in villages west of Dura.

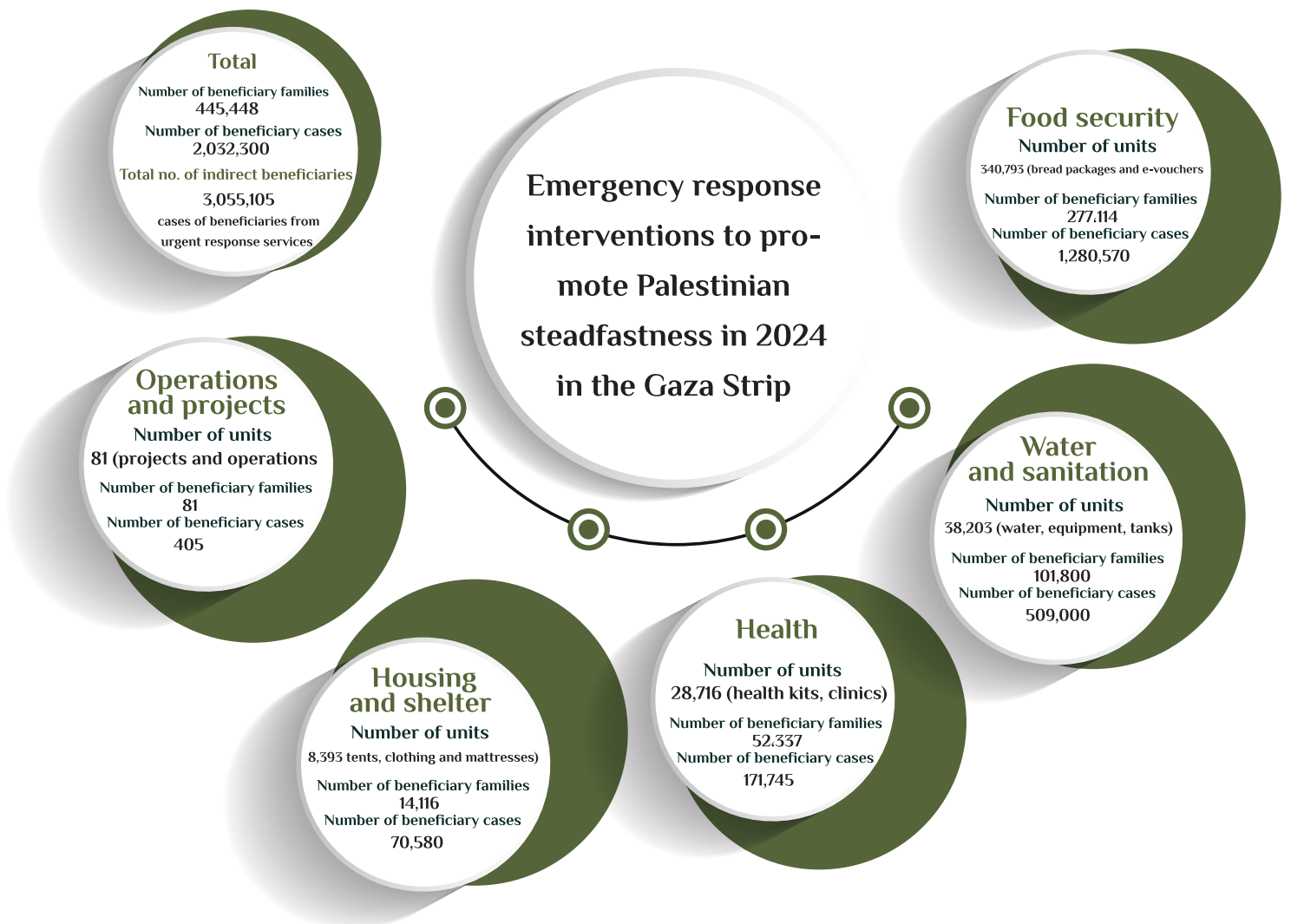
PARC has worked to promote dialogue between social sectors that make up Palestinian rural communities, including facilitating dialogue between citizens and representative bodies of the agricultural sector, advocates for farmers' rights and government institutions. The aim is to bolster the participation of farmers in decision-making and to develop local and national policies that contribute to developing the agricultural sector and helping farmers in marginalized areas to access basic services, in addition to implementing values of equality and justice between the various social sectors and promoting social solidarity with their local issues.

PARC implemented its interventions within the framework of advocacy and lobbying activities. These efforts aimed to create integration among the organization's various programs and to use media to highlight the challenges faced by rural communities and farmers in Palestine. These challenges include violations by the Israeli occupation, such as killing, destruction of agricultural infrastructure, and increased fragmentation between Palestinian communities, cities, and villages. They also include restrictions on the movement of people and goods, including agricultural products and inputs.

To address these issues, PARC strengthened its communication channels to exert pressure on the international community. It engaged donors and international partners, urging them to intervene and stop the unjust measures against citizens in general, and farmers in particular.



As part of this effort, PARC issued monitoring reports on the nature and scale of these violations, along with warning statements and analytical reports predicting the ramifications of Israeli measures and their impact on farmers and the agricultural sector. These reports also exposed Israeli policies aimed at annexation, confiscation of Palestinian farmers' lands and properties, and the forced displacement of farmers from their homes.



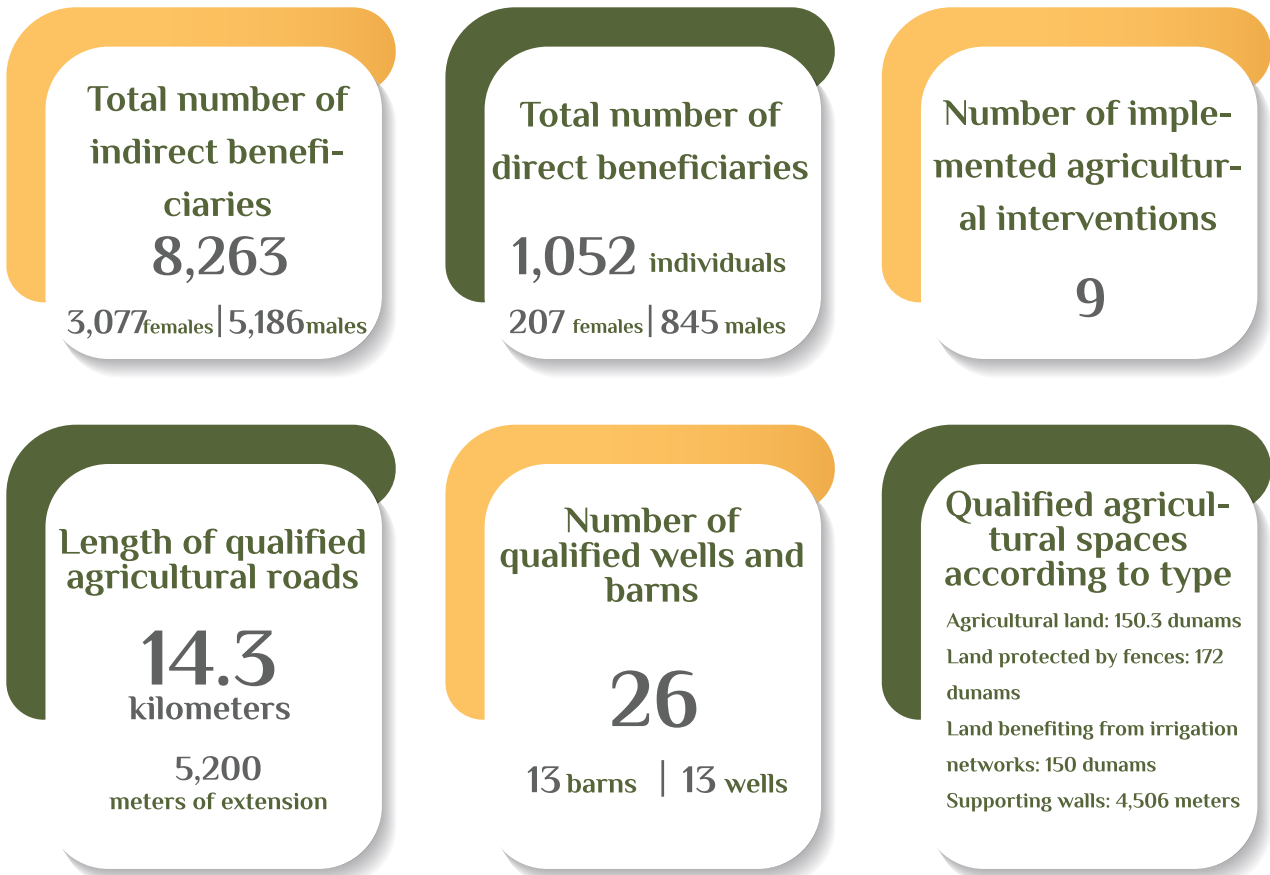
PARC interventions within the 2024 “Think of Gaza” campaign

Sector	Intervention	Time period	Units	Target locations	Targeted sectors	Direct beneficiaries	Indirect beneficiaries
Water	Potable water distribution	June-July, 2024	2,500 cups	Khan Younis, Gaza City and northern Gaza	Rafah, Gaza City and northern Gaza displaced	500,000	500,000
Sanitation	Repair to sewage networks	August, 2024	1,500 m ³	Northern Gaza	Northern Gaza displaced	20,000	20,000
Food security	Distribution of food parcels: chicken/rice	July-Sept. 2024	3,200 parcels	Khan Younis Deir Al Balah	Khan Younis and Deir Al Balah displaced	3,200	16,000
Food security	Bread initiative	Aug -Sept 2024	60,000 loaves	Khan Younis Deir Al Balah	Displaced from eastern sectors and Muwasi	6,000	30,000
Shelter	Clothing distribution	December 2024	1,575 parcels	Khan Younis Deir Al Balah	Muwasi displaced	6,000	573,875
						530,775	573,875

2024 Emergency Response Interventions in the Gaza Strip in partnership with WFP



PARC interventions in rehabilitating agricultural sector infrastructure



Total beneficiaries (direct and indirect): 9,315

PARC interventions in promoting resilience in 2024



Chapter 3



41 years of empowering farmers, developing the agricultural sector and enhancing the steadfastness of Palestinian rural communities

Most significant achievements in 2024 according as per the strategic plan

This year, PARC worked towards building new partnerships with several international partners, under which it implemented 33 projects, which can be divided according to the following strategic approaches and points:

Strategic objective: achieving sustainable management of natural resources

Towards achieving food security and sovereignty

Focal point: Developing infrastructure and management of natural resources in the agricultural sector

Since its establishment 41 years ago, PARC has worked towards strengthening the infrastructure of the agricultural sector. This effort stems from its view that a strong agricultural infrastructure is the foundation for ensuring sustainable interventions. It also guarantees that farmers have access to their lands, enables the private sector to invest in agriculture, and encourages youth to establish small and medium-sized projects in the agricultural field.

This sector's infrastructure is considered a reflection of development in the agricultural value chain. That is, it begins with production, to marketing and then to the final consumer. PARC has put much interest in the management of natural resources such as water, farmland and renewable energy resources. In this context, it has carried out interventions that contributed to improving levels of utilization of available natural resources through digging agricultural water wells, maintaining existing wells, laying down irrigations networks, treating wastewater for agricultural uses, reforming farmland, opening roads, providing farmers with equipment to protect their land, including fences, metal panels and other means.



Within the context of these interventions, PARC also opened a 3.5 kilometer agricultural road in the Ramallah/Al Bireh district and an 8.3 kilometer road in the Jenin district, in order to facilitate the access of 247 [male and female] farmers to their lands and enable them to increase green and planted areas through servicing 3,057 dunams of land. It also opened a 2.5 kilometer agricultural road in the Nablus district to enable farmers to access their lands in the village of Osreen, from which 90 farmers benefited. The total number of beneficiaries from PARC's interventions in the infrastructure and resource management sector this year was 1,052 direct beneficiaries and 8,263 indirect beneficiaries from the farmers' families.

Intervention	Unit of measurement	No. of direct beneficiaries		No. of indirect beneficiaries		District	Cluster
		Male	Female	Male	Female		
Rehabilitation of agricultural land	120 dunams	42	13	210	65	Nablus	Awarta, Majdal Bani Fadel
Supporting walls for agricultural land	3,600 meters	100	26	500	130	Nablus	Awarta, Majdal Bani Fadel
Fence and metal corners for land protection	172 dunams	59	8	295	40	Nablus	Awarta, Majdal Bani Fadel
Laying agricultural water pipeline	5200 meters	200	20	1000	100	Nablus	Beit Fourik, Beit Dajan
Irrigation systems for farmers of onion and garlic crops	150 dunams	47	2	235	10	Nablus	Beit Fourik, Beit Dajan
Rehabilitation of agricultural wells	13 wells	13		50	36	Nablus	Duma
Rehabilitation of sheep barns	13 barns	13		53	59	Nablus	Duma
Opening and rehabilitating agricultural roads	3.5 kilometers	70	40	1700	1800	Ramallah	Mazare' Nubani, Aroura, Qarawet Bani Zeid, Kufr Ein
Opening and rehabilitating agricultural roads	8.3 kilometers	150	97	750	485	Jenin	Zababdeh, Misilya Jdeda, Maythalon, Zabouba
Opening and rehabilitating agricultural roads (Base Core)	2.5 kilometers	90		227	213	Nablus	Osrin, Duma
Building supporting walls for agricultural roads	700 meters	16		40	37	Nablus	Osrin, Duma
Leveling and reclamation of agricultural land	30.3 dunams	12	1	40	33	Nablus	Osrin
Building supporting walls for agricultural land	2,906 meters	33		86	69	Nablus	Osrin
Total beneficiaries		845	207	5,186	3,077		
Grand total		1,052		8,263			





Within the framework of empowering rural communities to manage available natural resources, PARC has implemented a series of trainings on practical applications and best practices in the management and reuse of treated water in agriculture. These efforts aim to develop practical and sustainable models that contribute to the expansion of green areas and agricultural activities, while fostering rural economic growth.

Field of training	District	Location	Number of beneficiaries	
			Male	Female
Theoretical and practical training on best practices in the reuse of treated wastewater	Jenin and Nablus	Anin, Antara, Beit Dajan	39	6
Workshop on possible consumption of crops irrigated with treated water	Nablus	Beit Dajan Girls School		50

Natural Resources Program

The agricultural sector depends on natural resources that vary in their availability in various Palestinians, most importantly land, water and energy. These resources are subjected to policies of exploitation and monopoly by Israeli occupation authorities, manifested in the confiscation of land, prevention of access for farmers to their lands, restrictions on agricultural development projects and organized settler attacks on farmers and private Palestinian property. Occupation authorities monopolize the water distribution process and management of its sources. An Amnesty International report indicates to the discrepancies in access to water between settlers and Palestinian citizens. While average consumption for every Palestinian individual does not exceed 73 liters a day, with some individuals in rural and pastoral communities only having access to 20 liters/day, a settler consumes 300 liters per day. This is in addition to the catastrophic situation in the Gaza Strip, where 90%-95% of water supplies are considered contaminated and unsuitable for human consumption. In this regard, WHO recommends the average water consumption per person should not be less than 100 liters per day.

Through this program, PARC seeks to increase the area of agricultural land and develop the productive capacity of agricultural land. Throughout this year, work has been ongoing to reclaim agricultural land and provide agricultural inputs and tools to protect crops against human and natural hazards. Ongoing consultation was also provided to guarantee the sustainability and increase in agricultural produce. PARC continued its work in developing agriculture and methods through cooperatives an agricultural projects, providing farmers with resistant and competitive agricultural inputs. It also helped better prepare farmers and their ability to adopt with climate change and its devastating conse-



quences on the agricultural sector, such as sudden weather changes, rising drought rates, soil changes and natural disasters. It developed environmental programs for farmers to increase their abilities and skills for adapting to environmental changes through improving agricultural inputs, especially seeds resistant to climate change, scattering seeds and conducting greening campaigns to increase green spaces and forests in Palestine, to minimize these consequences.

In addition, PARC continued its efforts in maintaining and developing natural resources, particularly water and energy. This included the development and maintenance of agricultural and underground wells, as well as the excavation of rainwater collection wells. During the aggression on the Gaza Strip, PARC rehabilitated and restored numerous wells that had been damaged or destroyed by bombardment. Furthermore, it supplied several agricultural projects with access to clean energy sources, including solar power, in order to reduce energy costs in the agricultural sector and promote the use of clean energy in agricultural production.

PARC also worked on fostering the exchange of expertise among farmers, agricultural associations and projects, ensuring a steady flow of information and available platforms to learn about new agricultural techniques. This was accomplished by introducing international experiences in modern agriculture and localizing them. In parallel, PARC contributed to the promotion of efficient management and sustainable development of natural resources through the advancement of national and public policies for resource management, as well as starting a dialogue with decision-makers to improve resource management in Palestinian communities and invest in related infrastructure. Efforts were also made to encourage the adoption of policies, laws, and regulations that enhance the protection and preservation of natural resources.

In addition to conducting studies on the impacts of climate change on farmers and marginalized communities, PARC examined Palestine's compliance with international climate treaties. This study also highlighted the hardships faced by rural women as a result of rapid climatic change. Alongside this research, PARC developed agricultural guidelines for farmers across various production sectors. These guidelines focused on best practices for olive tree care, including pruning and harvesting, in order to improve productivity. Similar agricultural guidance was also provided to grape farmers.

One of the most significant interventions in this regard was the provision of continuous agricultural guidance to tomato farmers in the Gaza Strip throughout the period of cultivation up to production, particularly during the aggression, benefiting 200 farmers cultivating a total of 330 dunums. In the West Bank, 200 potato farmers were given the necessary agricultural guidance for areas between 2 to 5 dunums each. The potato farmers also received support in the form of seeds and organic fertilizers, thereby contributing to increased productivity in the vegetable sector.



Strategic objective: Improving standard of living (creating job opportunities and alleviating poverty)

Focal point: Bolstering cooperative and solidarity economy

The concept of cooperative and solidarity economy occupies major space in PARC projects and its thought process due to the importance of this type of economy in economically and culturally developing and empowering Palestinian society. This is due to the circumstances under which Palestinians live and as a result of measures imposed on them by Israeli policies, most significantly the severed contiguity between Palestinian communities, their isolation and prevention from exercising freedom of movement in their own homeland. This has rendered these communities vulnerable to the social, economic and political repercussions from Israeli imposed restrictions and complications. In this regard, PARC's interests lie in promoting a cooperative economy as an economic organization that marginalized groups and communities turn to in order to improve their economic and social conditions. This is through building participatory economic models that benefit a large number of people. These models take on a participatory structure to contribute to social building and integration and to taking advantage of the available economic capabilities and national resources at the level of Palestinian villages and towns.

This is achieved by strengthening both contractual and voluntary ties among individuals to improve their quality of life. It also involves organizing them into production institutions that ensure a minimum level of social welfare, protect against socioeconomic risks, and help curb rising poverty and unemployment in marginalized communities.

Within the framework of developing cooperative and solidarity-based economic models, PARC interventions are diversified through the institutionalization of new associations and cooperatives, as well through the capacity-building of existing ones. These efforts are complemented by providing grants and essential inputs to maximize the production of these associations, linking their products to the production value chain, and facilitating access to local markets while enhancing their marketing capacities.

In this context, associations were provided with the necessary inputs and financing to establish home gardens, seedlings, irrigation networks, trellises, and fencing. They were also provided with grape pressing and packaging machines, as well as kitchen equipment designed to expand the cooperatives' productive projects. These interventions contributed to increasing productivity and economic value, thereby enabling the absorption of new labor forces, particularly women and youth, with the goal of integrating them into the sphere of cooperative and solidarity-based production.



Association	District	Location	Type of intervention	Intervention
Members of the Osrin Charitable Society	Nablus	Osrin	Agricultural	Home gardens
Dura Food manufacturing Association	Hebron	Dura	Agricultural- food manufacturing	Planting three dunams of grapes; typical image of the association by providing it with saplings, irrigation networks, trellises and fencing/ providing grape pressing and packaging machines
Dura Al Amal Association	Hebron	Dura	Agricultural – food manufacturing	Supplying kitchen production equipment and utensils to provide ho meals and vocational training to beneficiaries
Beit Ummar Women's Agricultural Association	Hebron	Beit Ummar	Agricultural - food manufacturing	Supplying grape pressing, drying and manufacturing machines and materials and inputs for manufacturing and packaging
Al Khader Agricultural Association	Bethlehem	Al Khader	Agricultural - food manufacturing	Supplying grape pressing, drying and manufacturing machines and materials and inputs for manufacturing and packaging
Joura Al Shama'a Agricultural Association	Bethlehem	Joura Al Shama'a	Agricultural - food manufacturing	Supplying grape pressing, drying and manufacturing machines and materials and inputs for manufacturing and packaging

7 cooperatives were targeted in three districts and seven locations



In the fourth quarter of the year, PARC teams carried out a number of visits to cooperatives to identify the needs of existing associations and establish new cooperatives, within the Navarra project. During these visits, plans were formulated for upcoming interventions. This intervention is part of PARC's interest in contributing to the governance and institutionalization of cooperatives. Its goal is to guarantee their sustainability and achieve a high level of transparency among participants. It also seeks to promote a culture of democratic rotation in administrative positions and proper management of accounts to maintain steady cash flow and ensure long-term stability.

PARC's intervention is based on its perspective that solidarity-based and cooperative economy depends on foundations and values that must be reflected in its economic units. One of its top priorities is quality production with profit, self and community management of cooperatives and adoption of grassroots democracy as a decision-making approach. This is in addition to promoting collective ownership, diversity of production and finance resources, integration of the social and organization dimension as a source of change and local development.

PARC conducted a needs study for 15 cooperatives in northern West Bank districts. The study includes the priorities and recommendations necessary to build interventions in the coming phase, in cooperation with the cooperatives' administrative boards. The needs study included the following cooperatives:

Name of Cooperative	Location	District
Faqou'a Consumer Cooperative	Faqou'a	Jenin
Jalama' Women's Handicraft Cooperative	Jalama	Jenin
Jalboun Cooperative for rural development	Jalboun	Jenin
Sayda Cooperative for manufacturing and marketing of rural products	Sayda	Tulkarm
Anabta Cooperative for Food Industries	Anabta	Tulkarm
Bala'a Cooperative for Food Industries	Bala'a	Tulkarm
Kufr Labad Consumer Cooperative	Kufr Labad	Tulkarm
Beita Cooperative for Agricultural Manufacturing	Beita	Nablus
Sarra Cooperative for Food Manufacturing	Sarra	Nablus
Duma Cooperative for Livestock Development	Duma	Nablus
Qabalan Cooperative for Rural Development	Qabalan	Nablus
Kufr Laqef Cooperative	Kufr Laqef	Qalqilya
Kufr Thuluth Women's Cooperative for Agricultural Manufacturing	Kufr Thuluth	Qalqilya
Jayous Cooperative for Food Manufacturing	Jayous	Qalqilya
Imateen Cooperative for Agricultural Manufacturing	Imateen	Qalqilya
Total	15 cooperatives in 15 towns and villages distributed in 4 districts	



Focal Point: Economically empowering women, youth, smallholder farmers and businesses

Throughout 2024, PARC was keen on reviewing its interventions from a gender perspective in order to maximize benefits for marginalized social sectors. A study it conducted as part of its environmental justice program interventions, showed that even though women comprise 16.1% of those working in the agricultural sector, 84% of them work in family-based agriculture and are unpaid. Moreover, they contribute to the equivalent of 87% of work hours in livestock and 54% in crop production. The study recommended highlighting the importance of restoring consideration to the role of women and youth in the agricultural sector, to defending their rights and developing supportive public policies that respond to their needs. In this regard, PARC allocated some interventions to supporting women and youth through agricultural projects that empowered them with the necessary skills and knowledge to manage agricultural projects. These include 10 grants for women aimed at enhancing home economics and achieving food security for them.

As part of its efforts to support youth in establishing small and micro-scale agricultural projects, PARC targeted 126 young men and women, of whom 79 were female. The program aimed to equip them with 21st-century skills, including an introduction to clean environmental technologies for use in the agricultural sector, training on gender issues, agricultural project planning, labor rights, entrepreneurship, and other related topics. These trainings were designed to provide participants with comprehensive knowledge and skills necessary for managing agricultural projects.

In addition, PARC targeted 160 young men and women from the Jerusalem district, including 64 females, through intensive training programs. These programs focused on enhancing high-quality skills and knowledge to strengthen their employability and meet labor market requirements. Participants were also equipped with entrepreneurial skills essential for managing agricultural projects. Capacity-building activities included training in landscaping, hydroponics, and the development and management of entrepreneurial projects within the agricultural sector.

With regard to supporting smallholder farmers, PARC carried out targeted interventions in the Hebron district, aimed at bolstering the capacities of small-scale farmers in the field of sustainable agricultural production, improve crop productivity, and enable farmers to adopt modern agricultural techniques. A total of 370 smallholder farmers were targeted in these interventions, including 148 women farmers.



Name of training	District	Number of participants	
		Male	Female
21st century skills: planning agricultural, entrepreneurial projects, gender, workers' rights, green leadership	Jenin, Nablus, Tulkarm, Qalqilya, Jordan Valley	47	79
21st century skills: planning agricultural, entrepreneurial projects, gender, workers' rights, green leadership	Jerusalem	30	20
Landscaping	Jerusalem	30	20
Hydroponics	Jerusalem	30	30
Feasibility study and projects operation plan	Jerusalem	6	4
Smallholder training for farmers	Hebron	222	148
Grand total of youth and farmers in trainings		656	



Developing agricultural projects through providing technology and developing workers' capacities:

Developing agricultural projects is considered one of the most important dimensions taken into consideration, in order to develop their operational capabilities, increase productivity and employment. In this regard, PARC's activities revolved around empowering youth and women as agents of change in agricultural value chains, especially fresh vegetables. Production inputs of seeds were supplied to increase the quantity of transplanting seedlings at two nurseries in Khan Younis and Deir Al Balah, in order to reduce the cost of transplanting seedlings to one dunam of land, which costs around ILS1200. The project had a positive impact in these areas and were connected them to a water harvesting network by providing irrigation water tanks.

In the West Bank, several interventions focused on developing the infrastructure of small-scale projects to enhance their production and operational efficiency. In this context, the flooring of the packaging, sorting, and storage station in Burqin was rehabilitated and reinforced with high-quality concrete, in line with the requirements of loading, unloading, storage, and sorting activities for production and marketing projects.

In addition, PARC supplied agricultural saplings to improve nursery transplantation practices and provided and installed an electric shading system covering an area of 1,470 m², with a shading capacity of 55%. This system contributes to improving the quality of seedlings by increasing temperatures during winter, lowering them during summer, and reducing water consumption in the summer months (June–September) due to the shade it provides. Water savings are estimated at approximately 10% on a monthly basis.

Type of intervention for developing agricultural project	Location	District	Impact of intervention on developing agricultural works	No. of employment opportunities
Import grant for agricultural materials	Khan Younis Deir Al Balah	Khan Younis Central (Gaza)	Drop in price of saplings for farmers by 40%	15
Development of infrastructure: rehabilitating flooring of the packaging, sorting, and storage station and reinforcing floor with high-quality concrete in line with the requirements of loading, unloading, storage, and sorting	Burqin	Jenin	-Providing appropriate flooring for loading, unloading and sorting -Providing cleaning of vegetables - Providing a healthy working environment for workers, especially in winter (during the rainy season, work is disrupted, sometimes for days, due to poor flooring where loading and unloading take place	5
Providing nursery supplies: supplying and installing an electric shading system of an area of 1,470 m ² with a shading capacity of 55%	Arraba	Jenin	-Improving quality of saplings - Decreasing water consumption by 10% -Providing appropriate amount of shade for medicinal plants, especially during heat waves - isolating weather factors and their impacts on the seedling process	25
Supporting scale-up farms to reduce waste and to recycle sheep farm waste	Hamsa Tahta	Jordan Valley	-reducing feed consumption - Recycling then reusing food waste -reducing production costs of the farm - Increasing project income and profits	3
Prototype that introduces technology for a central control system to control irrigation scheduling and monitor fertilizer needs	Beit Dajan Plain	Nablus	-A trusted contact was established through the LoRaWAN network - Enabling farmers to make decisions in the production process - Increasing productivity of tomato farmers in Beit Dajan amid water scarcity - Reducing operational costs through minimizing manual interventions and conserving resources	Intervention target: 3 farmers/15 workers
Total number of employment opportunities				63





PARC seeks to advance agricultural projects by creating an enabling environment for their success. It places strong emphasis on training and capacity-building for agricultural workers and engineers. This includes raising awareness of the challenges they may face in managing or institutionalizing agricultural projects, particularly in relation to policies, regulations and laws governing the agricultural sector.

In addition, PARC provides technical skills through hands-on training within agricultural projects and production companies. These efforts aim to strengthen operational capacities and facilitate the integration of agricultural professionals into the labor market.

To achieve this, throughout 2024, PARC has worked on implementing a training program targeting 18 agricultural engineering graduates, who were hosted in PARC's Jericho district branch. The trainees were integrated into a series of theoretical and hands-on training workshops in agricultural production. In all, 100 graduates were trained and after specific employment and training criteria was adopted, 47 were chosen from among them, 91% of whom were women. It should be noted that new graduates from the more marginalized areas were targeted, given the need for engineers working in this sector and in agricultural production, in particular from the Tubas and northern and central Jordan Valley regions (Ein Beida, Kardala, Bardala, Froush Beit Dajan, Tubas, Aqaba, Tayaseer, and Tamoun). Their specializations were varied, whereby consideration was placed on employing them in a field that merges between their specialization and the type of training they received, which revolved around four points: smart and precision agriculture, environmentally sound agricultural practices, animal production and agricultural marketing.



Strategic goal: Promoting steadfastness, emergency response and alleviating and adapting to climate change

Focal point: Promoting food security and emergency response

2024 was a year of all-out aggression on the Gaza Strip, creating massive destruction to all vital sectors, in tandem with a settlement assault and annexation of Palestinian land in the West Bank and in Area C in particular. In addition, the scale of attacks and raids on city centers escalated along with the burning and destruction of citizens' properties in Palestinian villages, along with the displacement of Bedouin communities. However, in response to the complexity of the humanitarian situation, PARC fell back on an emergency plan to help respond to the populations' emergency needs while continuing its interventions and development projects to help enhance the steadfastness of farmers in rural communities and to alleviate the increasing economic hardships due to the war.

Emergency response interventions in the Gaza Strip:

Since the beginning of the aggression on the Gaza Strip, PARC has been at the forefront of institutions to intervene with emergency responses, in cooperation with its international and local partners. At the beginning of its emergency interventions, it depended on its network of volunteers, who have worked on building their capacities, fostering mutual trust and ensuring an ongoing connection to PARC's activities for several years. The volunteers were tremendous support for PARC's work in terms of their ability to access various places with the most needs in addition to providing it the priority needs of residential clusters and displacement tents, which enhanced its ability for direct response and to help alleviate people's suffering in various parts of the Strip. Due to the direct targeting of all vital and economic sectors throughout the aggression, it was imperative to respond to citizens' needs and to provide basic services such as electricity, water, housing, health care, education, food, cleaning products, household supplies, tents and others.

One of the most significant interventions was maintenance of the main groundwater well in the Sheikh Radwan neighborhood, which provides drinking water to neighborhoods north of Gaza City. Israeli occupation forces had targeted six electric generators that pumped water to residential areas in addition to isolating wastewater from it. This intervention mitigated health and environmental risks caused by wastewater mixing with potable water. PARC provided new generators and fixed the generators that had been partially affected by the attack. It also provided maintenance for the area around the Sheikh Radwan pond, resulting in the reoperation of the well at a capacity of 60 meter² per hour.



Due to the targeting and destruction of the electricity sector in the Gaza Strip, energy sources have become scarce. Desalination plants, which rely heavily on electricity, were particularly affected. To address this problem, PARC provided 12 desalination plants. Each was equipped with a solar energy station to ensure sustainable desalination services despite the lack of conventional energy resources. This allowed the plants to remain in operation and continue to provide water services to the displaced in various areas, in addition to the desalination plants. PARC also provided drinking water of approximately 110,000 cups of water distributed to various residential clusters and displacement camps to compensate for the severe shortage of drinking water.

With the intensifying waves of displacement, the humanitarian crisis has continued to escalate and grow more complex. In response, PARC carried out several interventions. It equipped 48 shelter centers and rehabilitated four health clinics. It also set up and equipped 11 educational tents. In addition, PARC provided 78 dumpsters for waste collection in displacement camps.

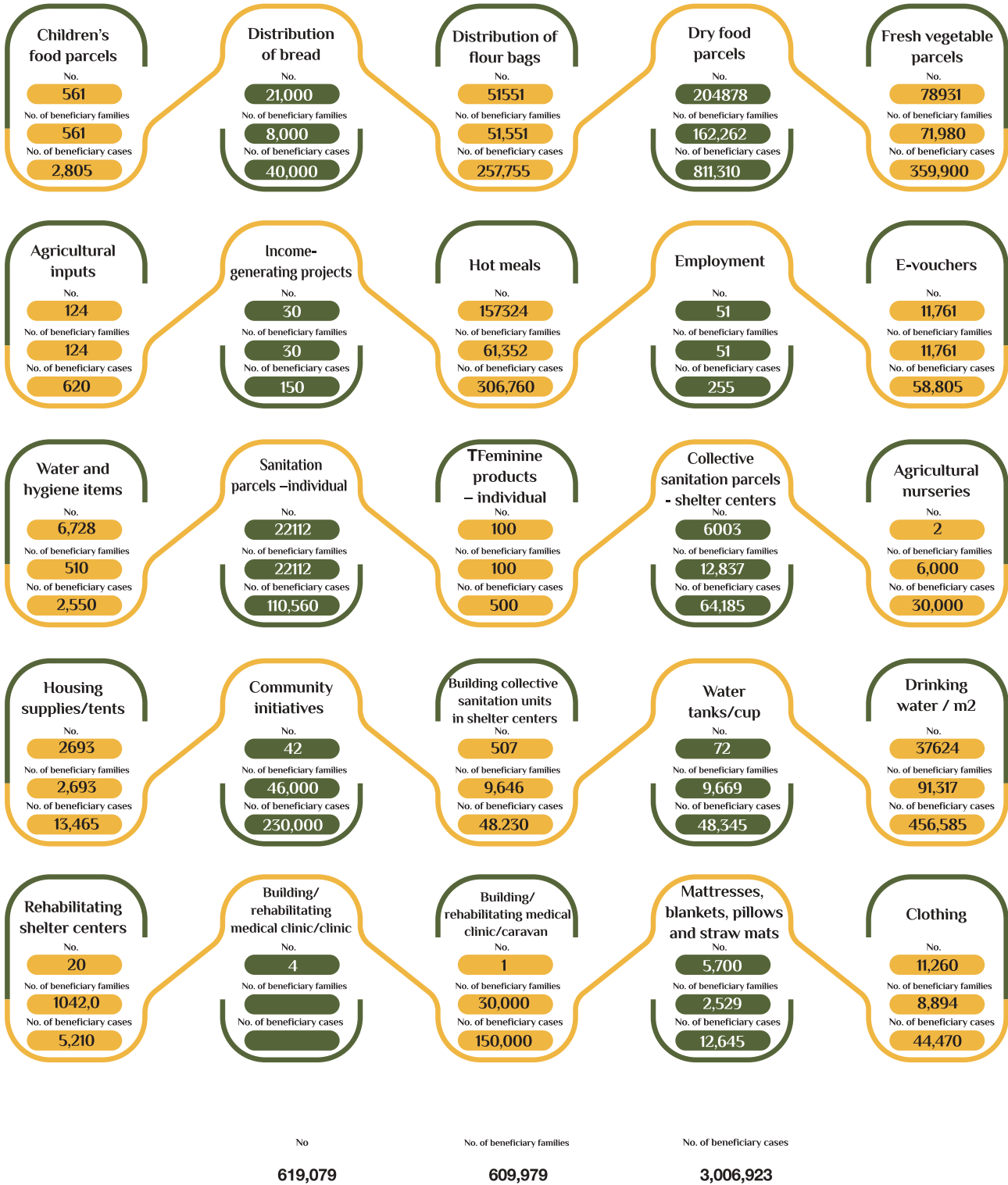
PARC also supplied housing and shelter supplies for around 3,850 families. It supported 10,000 families with readymade clothes and assisted 4,200 families with covers and warm blankets. In tandem, 2,849 awareness-raising sessions were given to displaced citizens on the importance of keeping the shelter centers clean in addition to awareness-raising sessions on war remnants on the Gaza Strip.

In order to enhance partnership and solidarity with local communities and displacement camps, PARC was keen on continuing to implement social initiatives in cooperation with displacement sites management and camp representatives and population clusters affected by the war. These social initiatives included camp cleanup and awareness campaigns for citizens, building latrines, organizing the necessary sewage infrastructure, educational initiatives and others. PARC's teams and volunteers carried out 42 community initiatives.

Furthermore, PARC worked on providing minimum income for families through supporting 30 income-generating projects, and establishing four agricultural nurseries in order to provide agricultural inputs such as seeds, and contribute to the continued partial operation of the agricultural sector, since it is the only source for securing a part of the people's vegetable and fruit needs.



Types of emergency response interventions in 2024 in the Gaza Strip







Success Story

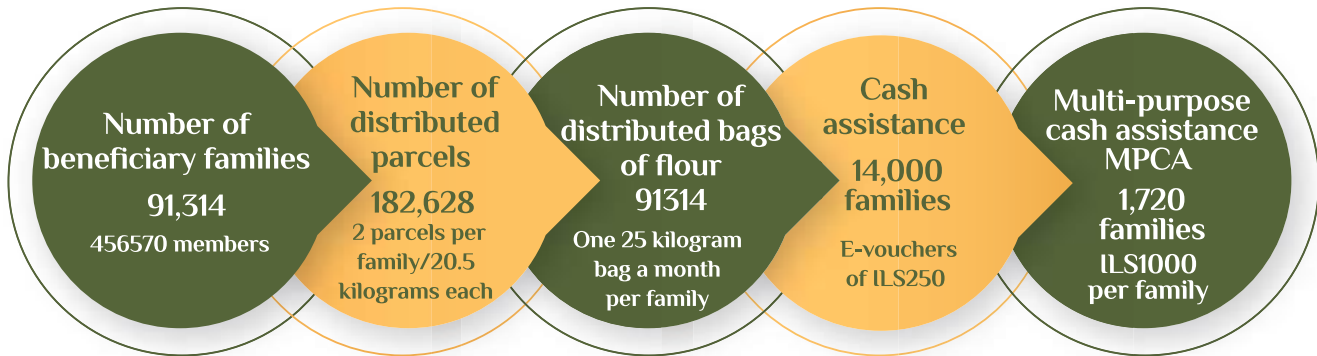
“Faten Al Umrani” is one of hundreds of thousands of women who have suffered tremendously from the ongoing war on the Gaza Strip. She was a seamstress for several years in her home in Shujaiyeh neighborhood, east of Gaza City. Suddenly, she found herself facing an unknown destiny in the midst of the war. Faten was a lifeline for her husband, who suffered from cancer, and for her children, all with chronic illnesses. Her work provided food, treatment and everyday life necessities for the entire family.

However, the war and the continuous displacement stole away her job and her sewing machine. She found herself without a provider and without a livelihood. She was forcibly displaced with her family from the east of Gaza to the west in Tel Al Hawa, then from Gaza City to Nusseirat, then to Rafah and finally to Deir Al Balah. Her forced journey has been ongoing and repeated throughout the war, with all aspects of life collapsed and destroyed in Gaza. Workers with day jobs were forced into accumulated debts, which is what happened with Faten, climbing to around ILS5,000. Still, the surrender is not an option for Gaza’s women, nor is it in their dictionary, even if they need help or support, which came in the form of PARC and International Primary Relief with support from OCHA. They provided Palestinian families with cash and in-kind assistance, including Faten, who was given a financial grant of ILS1,000.

Faten Al Umrani did something different with the aid she received, investing in the career in which she had worked for so long. She created a new sewing machine with a motorcycle wheel and a used wooden table, thus rendering PARC’s grant a project to sustain her income. She began to work, marketing her work among her neighbors in the shelter camp in Deir Al Balah in the central Gaza Strip, so she could be able to provide food for her family every day and afford her husband’s and children’s medicines. She became self-sufficient from her simple project and currently hopes to expand it. She now needs solar panels to continue and a place to be able to expand, including a dressing room, instead of her tent. The small space encumbers her ability to work. Still, Faten is grateful to her supporters and the help she received. Her story and her determination proves there is a way out of the bottleneck.



Emergency response interventions in the Gaza Strip in partnership with WFP

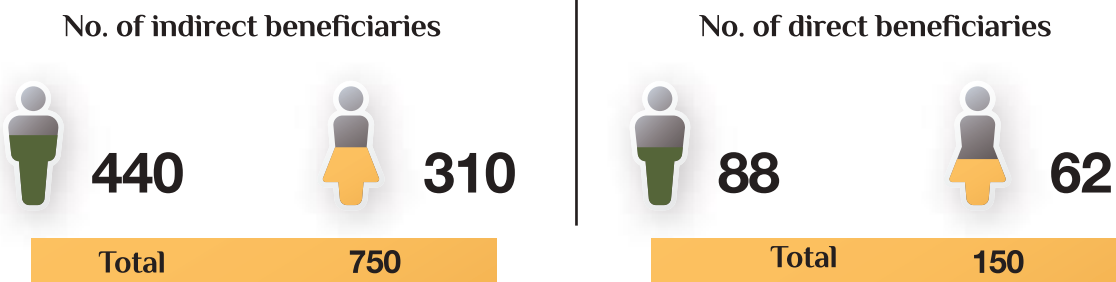


Emergency response interventions in the West Bank:

PARC has always considered marginalized areas in the West Bank its priority, especially areas subjected to continuous Israeli army and settler violations. In this regard, it designed grants programs, aimed mainly at promoting food security, including grants earmarked for agricultural and livestock projects in the Hebron district. It provided 150 grants for small projects and as support for existing ones, as a means of enhancing the continuity of these projects in light of the economic crisis created by Israeli measures and restrictions

Agricultural and livestock projects

Hebron



Focal point: Economic empowerment, entrepreneurial, green and circular economy:

Over recent years, PARC has adopted models of economic and circular economy as a strategy, given its vital role in achieving sustainability and economic development of agricultural and environmental projects. Here, the economy represents a new model of economic development as it depends on the effective use of available resources and reduces agricultural waste and hence lowers the rate of pollution to ensure sustainable economic growth and resistance to a number of environmental risks resulting from climate change.

In order to enhance its interventions in this regard, PARC designed a number of grants to empower youth in marginalized areas, to establish and implement 53 small agricultural and micro-projects, 37 of them granted to women and 16 to men. Due to the political situation and specific case in Jerusalem, several entrepreneurial and environmental agricultural projects were implemented there. Grants were provided to establish five entrepreneurial projects for youth in Jerusalem, three for males and two for females.

Grant objective	District	No. of direct beneficiaries		No. of indirect beneficiaries	
		Male	Female	Male	Female
Establishing agricultural and environmental projects	Jenin, Nablus, Tulkarm, Tubas, Qalqilya, Jordan Valley	16	37	80	185
Establishing entrepreneurial agricultural and environmental projects	Jerusalem	3	2	18	
Total	7 districts	19	39	98	12197
Total number of beneficiaries		58		295	

Furthermore, three entrepreneurial agricultural projects, such as planting berries, turmeric and artichoke plants, were supported, since these are considered pioneer agricultural projects. What’s more, there is a growing need for these products in Palestinian markets, which boosts their local production. It also reinforces the steadfastness of farmers on their land, through enabling them to manage and establish income-generating entrepreneurial projects

Type of project	Area	Location/district	Type of intervention
Blueberry farm	2 dunams	Ein Beida/Jordan Valley	-providing plastic covers for 2-dunam area -Providing 40% of shading network
Turmeric farm	500 m2	Nuweima/Jericho	-Providing shading network
Artichoke “Akkoub’ farm	3 dunams	Tayaseer/Tubas	-Establishing a shaded netted structure







Success Story

Abdel Kareem Abu Shehab – a story of defiance

Some people may lose hope and surrender after suffering a painful work accident, but Abdel Kareem Abu Shehab, 25, looked at things differently. Abdel Karim, who was one of our most prominent beneficiaries, grew up in the Naqqar neighborhood in the city of Qalqilya, where much of the population works inside the 1948 occupied lands as their main source of livelihood, given the close geographic proximity and the higher wages. Abdel Karim was no exception. Immediately after he turned 18 and graduated high school, he began to work in the agricultural sector inside the occupied '48 Palestinian territories across the Green Line. During this period, he worked as a mushroom farmer, spending four years learning all about this special harvest. He was passionate about his job and would go to work, happy and enthusiastic every day.

However, in an unexpected incident, he was hit by a car on his way to work. He sustained serious injuries and was taken to hospital in critical condition. After a year of physiotherapy, he is now able to walk on crutches. In spite of this challenge, Abdel Karim has never given up his passion and his dream, which is to own his own mushroom farm. His enthusiasm only grew once his idea materialized through PARC's empowerment project.

Abdel Karim faced major challenges to realizing his dream due to his health condition, but this did not stop him from trying. He decided to confront his disability face-on and turn his ambition into reality when he heard about the project. He decided to establish a mushroom farm and production lab in his hometown, to supply the Palestinian market with fresh mushrooms, overcoming his personal obstacles and the difficulty of accessing imported spores. After being accepted in the project, he enrolled in the incubation period, which provided him with the necessary skills to manage his project and which helped him adapt with his disability. He was also able to formulate an effective work plan for his farm, estimate the financial requirements needed to establish it and gain the ability to deal with any challenges that could arise during the production process. With time, Abdel Karim succeeded in securing the necessary funding after he impressed the arbitration committee with his extensive knowledge and expertise, which ultimately enabled him to establish the first complete mushroom farm in the district.



The new project is not confined to growing fresh mushroom and selling them in the Palestinian market. It also includes a lab for producing spores and fertilizer necessary for the production process. Mushrooms are mostly imported and under Israeli control, which makes this a self-sufficient project. The grant helped Abdel Karim establish the first isolated production room/lab, with the project today producing 500 kilograms of mushrooms a month, which are sold in the local market based on pre-orders. Since his project is full-time, Abdel Karim is planning to expand production by establishing more production rooms to increase the quantity to 3,000 kilograms a month in order to meet the growing demand.

PARC was able to change Abdel Karim's lifestyle, turning his weakness into opportunity and providing a model for all Palestinian youths to emulate on the importance of strong determination. It also offered Palestinian society new evidence of the importance of PARC's work and its role in improving the lives of youth in all parts of Palestine.

Focal point: Promoting environmental justice and alleviating and adapting to climate change:

In 2024, PARC increased its interventions to promote environmental and climate justice in Palestine. These efforts were in response to the serious challenges facing the Palestinian environment, particularly Israeli violations and aggressions, most notably the untreated wastewater released from settlements in the West Bank. This has severely harmed agricultural land, leading to soil erosion, increased salinity, and a sharp decline in productivity.

Climate change also poses a major challenge for Palestinian society, with its impacts evident across all aspects of life, and most prominently in the agricultural sector. Rising rates of desertification, along with increased water and air pollution, have further compounded these challenges.

Against this backdrop, PARC directed its interventions toward reducing the impacts of climate change, strengthening the capacity of local communities to manage and respond to related risks, and raising public awareness. In addition, efforts focused on enhancing the agricultural sector's resilience and recovery through the adoption of best agricultural practices, reducing dependence on chemical fertilizers, and providing farmers with improved, climate-resistant seeds and inputs.



PARC interventions are unique in their promotion of the role of youth and women and enhancing their involvement in designing responsive community plans to safeguard the environment and pressure local councils and municipalities to adopt this plan. This is in addition to enhancing the role of local and international partners, civil society organizations and the private sector, to recruit them into pressuring either the Palestinian government or specific ministries to assume their responsibilities towards protecting the environment or to pressure Israeli occupation authorities into halting settlement activities and environmental violations.

PARC also made efforts to consolidate environmental practices that enhance the local community's capacity to protect the environment and reduce risks and behaviors that contribute to increased pollution and damage to crops and their quality. This included institutionalizing environmental clubs in the Nablus district, implementing measures to mitigate the role of quarries in soil and air pollution in Aseera Al Qibliya, scattering seeds in the Qashda forests to increase green areas in locations that are difficult to access due to the region's geography.

It also prepared a study on "Palestine's Accession to International Conventions and Treaties", which highlighted the State of Palestine's commitments to environmental and climate issues under the international agreements it joined. The study also focused on the impact of climate change on rural women, particularly in the agricultural sector.

The study was discussed in dialogue sessions and a three-day youth camp titled "Ard". Furthermore, a focused conference was convened, bringing together partners, civil society organizations, government ministries and institutions, farmers' representatives, and cooperatives.



Dialogue session to discuss study results entitled, “Palestine’s Accession to International Conventions and Treaties” and its impact on gender, especially rural women



Youth camp to integrate Palestinian youth in local development plans entitled “Ard Camp”



Conference on the State of Palestine’s accession to international agreements and treaties related to climate change



Environmental preparation campaigns

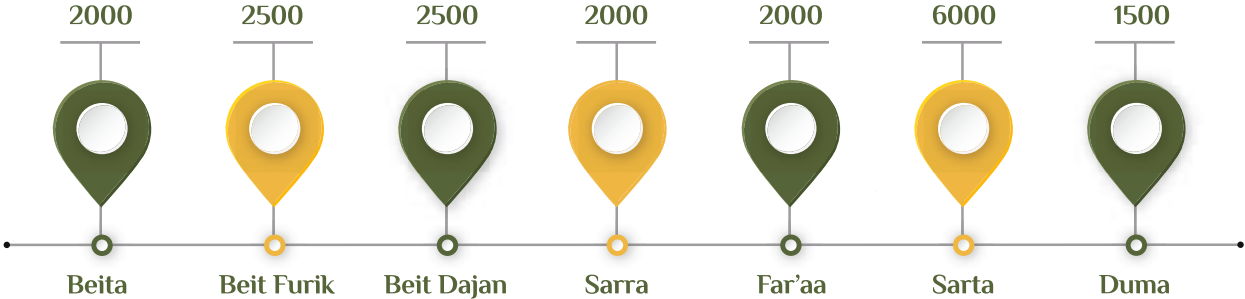
Through several of its interventions, PARC launched national greening campaigns in partnership with grassroots organizations, municipalities and schools, in order to increase green areas in Palestine, improve environmental conditions and mitigate climate impacts by recognizing the importance of green spaces and increasing afforestation. PARC also aimed to raise awareness on the importance of preserving agriculture and enabling citizens to cultivate their land, in addition to safeguarding the connection of future generations to agriculture by raising their awareness to its significance in the Palestinian context. This was achieved through targeting school students and involving them in activities such as planting school gardens and establishing environmental clubs, which play a role in continuing to raise student awareness on the importance of environmental agriculture and its role in mitigating the risks of climate change.

Greening campaign	District	No. of trees	Partners	No. of participants
Anabta campaign	Tulkarm	100	-Committee for forest development - Anabta municipality	20
Al Bireh campaign	Al Bireh	300	-Education Directorate -Al Bireh Municipality -School students - Women's institutions	55
Hakura Center campaign	Al Bireh	1,200	-Hakoura Center	20
Nablus schools campaign	Nablus	10,000	- Education Directorate -Nablus Farmers Association -Kufr Qaleel Council	300 participants 34 farmers supported with trees
Jifna campaign	Ramallah	355	-Youth groups -Volunteers and activists	77
Greening campaign for public spaces	Mazare' Nubani-Ramallah Zababdeh, Jenin	650	-Municipalities and village councils -Local institutions - youth volunteers	100
Total		13,075		614 participants and 34 farmers direct beneficiaries





Furthermore, PARC also supported women in urban areas with 18,500 saplings, in order to invest in home gardens and converting them into agricultural production, in partnership with multiple associations and cooperatives in various areas



7 locations and total of 18,500 saplings



Strategic objective: immunity

Focal point: Boosting immunity through capacity-building for community protection committees:

1. Community protection committees

Several implemented projects focused on strengthening and building the capacities of community protection committees in Palestinian villages and towns. The overall aim was to enhance the skills of committee members, promote their community participation, and empower them to engage in political and social spaces available within their communities. These initiatives also sought to create dialogue platforms that can influence political, social, and economic realities at both the local and national levels.

PARC's interventions concentrated on developing the committee members' abilities to analyze natural risks as well as risks from Israeli occupation measures. This approach was meant to minimize risks and their impacts, particularly given the increasing exposure of Palestinian communities to a wide range of challenges that hinder their development. These committees then apply the knowledge and expertise they acquire to reduce the effects of risks and to contain the impact on different sectors within villages, towns and Bedouin communities.

In 2024, PARC targeted several community protection committees to empower them and increase their influence within their respective communities through designing training programs and workshops that focused on increasing the capacities and knowledge of committee members in the use of the participatory search tool. The workshops also focused on designing and carrying out lobbying and advocacy campaigns on their local issues, mechanisms for monitoring and documentation, first aid and civil defense, measuring exposure points, DRR (Disaster Risk Reduction) management of war remnants, especially given increasing Israeli military raids. A total of 19 out of 67 community protection committees were targeted, distributed throughout West Bank towns and villages and plans for these committees were developed in 11 locations.

Additionally, a unified community plan was formulated for seven populations clusters west of Dura, where the risks and priorities that require intervention were determined, to prevent the risks or at least alleviate their impacts where by the community is able to handle them. It should be noted that emergency intervention was designed for local communities through providing them with financial grants in addition to the percentage share from the communities, to enable them to enhance their infrastructure to better confront possible risks.



Targeted protection committees in 2024

Name of committee	Community plans development	Name of workshop	No. of participants	Males	Females
Kifl Hares	Community plan 2024	Participatory search tool	32	20	12
Awarta	Community plan 2024	Lobbying and advocacy training	36	17	19
Joreesh	Community plan 2024	Monitoring and documentation mechanisms	28	12	16
Misilya	Community plan 2024	First aid and civil defense	68	45	23
Maythaloun	Community plan 2024	Measuring exposure points	18	6	12
Mazare' Nubani		Disaster Risk Reduction DRR	24	8	16
Osreen	Community plan 2024	Awareness in dealing and managing occupation remnants	15	8	7
Jdeida	Community plan 2024				
Kobar	Community plan 2024				
Sikka	Community plan 2024, includes seven locations				
Beit Roush Foqa					
Beit Rush Tahta					
Deir Al Asal Foqa					
Deir Al Asal Tahta					
Al Majd					
Beit Marsam					
Al Khader	Community plan 2024				
Joureh Al Sham'aa	Community plan 2024				
Dura	Community plan 2024				
Total			221	116	105

Subsequent to the identification of community priorities through the protection committees' plans, PARC then responds to these priorities by designing community initiatives and developing corresponding implementation plans. Thus, PARC supported the protection committees with four initiatives aimed at improving the infrastructure of these communities in a way that aligns with citizens being able to access natural resources, such as land and water. They also strengthened their capacity to utilize agricultural land, enhance its productivity, and improve access to it. This was achieved through land reclamation, the construction of roads, and the drilling and maintenance of groundwater wells to secure the water necessary for both drinking and agricultural needs



Initiative	Location/district	PARC support	Initiative cost/euro
Rehabilitation of road between Amateen and Aseera Shamaliyeh	Amateen - Nablus	Support of 221,015 tons of base core (category C)	10,000
Supply, installation, and maintenance of water tanks – base core for Wajeh Qibli road	Deir Bzei', Ramallah	Support of 12 tons of base core	7,000
Support wall for schools, iron supply	Bruqin, Salfeet	4 tons of iron	10,000
Artesian well maintenance and repair	Marj Naajeh – northern Jordan Valley	Project maintenance, increase of water supply production and pumping to citizens and their farms	40,600
Total			67,600

PARC strengthened its partnership with the community protection committees through carrying out community campaigns and solidifying their networking role with community partners and representative councils such as village and town councils. One of PARC's most significant campaigns it carried out in partnership with these committees was its "We are with you" olive picking campaign, to support farmers during the olive harvest and document violations against them. It also aimed at enabling them to access their lands and provide them with agricultural equipment to pick olives during the harvest in the shortest possible time while still preserving the production quantity of the season.

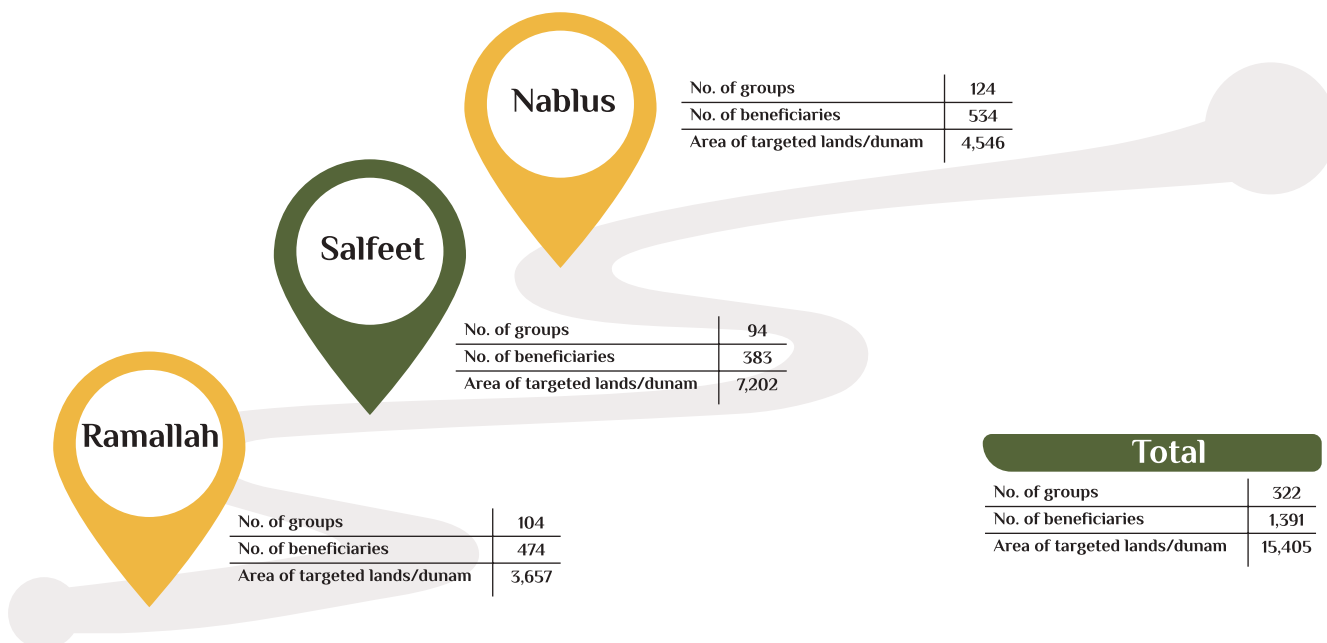
The campaign included lands near or behind the separation wall or near settlements and settlement outposts and bypass roads where farmers face major challenges that hinder their ability to access their land. PARC implemented its campaign in 22 locations in the West Bank and Gaza Strip in spite of the complex security and humanitarian conditions. It provided farmers with the necessary tools to pick olives, including ladders, covers to collect the olives and rakes.

No. of districts	No. of targeted locations	Agricultural supplies		
		Rakes	Covers	ladders
8	22	585	282	131
Total beneficiary farmers		128		
No. of dunams		365		
Total no. of volunteers in campaign		357		





PARC also implemented a campaign to distribute agricultural equipment to farmers during the olive harvest. The campaign featured innovating collective action to maximize the collective benefit from the agricultural equipment, in addition to enabling them to collectively pick olives during the harvest season.



Type of equipment	Olive picker	Wooden ladder	Cover for gathering olives	Manual Pruning shears	Manual saw	Lawnmower	Oil tank	Electric pruning shears
No.	340	1,800	3,540	590	1,180	340	1,180	590



Social and Economic Empowerment Program

The social and economic empowerment program aims to improve standards of living for marginalized rural communities and sectors through combatting poverty and creating employment opportunities in the agricultural sector, which provides social and economic immunity to the labor force in Palestine.

In light of the complicated circumstances throughout 2024, caused by the ongoing aggression on the Gaza Strip, over 350,000 Palestinian workers became unemployed. Among them were 150,000 workers who had been employed without permits and were prohibited from entering the Israeli market. As a result, unemployment rates increased among the Palestinian labor force. Through its interventions, PARC's contributions focused on absorbing a portion of Palestinian labors in the local agricultural sector, by providing them with grants, assistance and the necessary support for their return to the agricultural sector. This was achieved by expanding agricultural products to accommodate a number of workers or by supporting others in establishing income-generating agricultural projects.

PARC implemented projects designed to strengthen agricultural value chains by increasing production efficiency, reducing costs, and enhancing the competitiveness of local agricultural products. Alongside these efforts, PARC carried out initiatives aimed at empowering youth and women in rural communities, particularly in the most marginalized areas in addition to developing the capacities of cooperative and women's associations to enable them to provide high-quality services and to foster innovative and specialized initiatives within the agricultural sector.

Through these interventions, PARC sought to achieve realistic outcomes that contribute to economic and social empowerment, increase income levels among marginalized groups, and promote gender equality. The interventions supported the organization and representation of target groups within empowerment programs, encouraged greater investment in the agricultural sector while reinforcing its integration with other productive sectors, and strengthened the role of women in agricultural production by advancing their ownership and expanding their agricultural holdings. In addition, efforts were directed towards improving farmers' access to both local and international markets and creating an enabling environment for innovation and entrepreneurship in the agricultural sector.

To achieve these objectives, PARC reviewed the Palestinian NGO Law in order to develop a regulatory environment for the cooperative sector in Palestine. It also supported seven cooperatives with agricultural inputs and food processing machines in addition to assessing the needs of 15 cooperatives and building their technical, managerial and production capabilities and enabling farmers to access local markets. This was achieved through holding several exhibits for agricultural products, such as the exhibits in Al Bireh and Nablus, with a special both for women's agricultural products, displayed in various areas. This also helped to market agricultural products through digital and media campaigns, in which the products were presented and promoted to encourage local consumption and support Palestinian farmers.



As for external markets, PARC depends on “Al Reef” for Investment and Agricultural Marketing Company, which is considered its marketing arm in external and foreign markets. PARC also supported 58 entrepreneurial projects in the agricultural sector by providing financial grants to support for these projects. It also built the capacities and skills of 647 youths, empowering them with 21st century skills, which include planning and management processes for modern agricultural projects, the introduction of new technologies and marketing skills, to access local and foreign markets and raise their awareness on environmental and rights issues.

Immunity Program

Through this program, PARC aimed to strengthen the resilience of local communities by providing the necessary means for citizens to remain steadfast on their land, particularly in Area C, in locations near the separation wall, settlements, East Jerusalem, and the Gaza Strip. The interventions included means of connecting marginalized communities to essential services through the provision of water, sanitation, and electricity networks, improving the quality of transportation services, and enhancing household resilience by raising income levels and combating poverty.

As part of its efforts to strengthen the resilience of rural and Bedouin communities, PARC distributed basic food supplies in areas of Masafer Yatta, south of Hebron, provided livestock inputs and fodder, rehabilitated several rainwater wells, and organized greening campaigns. Within the framework of contributing to the development of infrastructure and basic services in rural communities, PARC implemented five community initiatives in cooperation with community protection committees and local actors. These included initiatives to rehabilitate agricultural roads in Immatin, Asira Al Qibliya, Deir Ibzi’, and the western Dura countryside, in addition to reclaiming and rehabilitating an artesian well in Marj Na’aja in the northern Jordan Valley.

In regards to bolstering the capacity of local communities in emergency response, PARC established displacement site management committees to ensure a rapid response to the needs of displaced groups and to strengthen their capacity in managing displacement sites and addressing risks, particularly military remnants. A total of 21 displacement site management committees were formed, including 14 in southern areas, three in northern Gaza, and four in the central region.

In the West Bank, PARC continued to build the capacity of 76 community protection committees in rural communities. These committees were targeted with a series of trainings and activities designed to equip them with the necessary skills and knowledge to mitigate risks facing their communities. The training workshops focused building the capacity of protection committee members in documenting violations and managing community campaigns, participatory community planning, risk management and mitigation, and emergency case management.



Strategic objective: Bolstering PARC’s role in leading mobilization and influence

First focal point: enhancing community cohesion

1. Community center in Jiftlik

PARC has focused on enhancing the dimensions of a comprehensive and integral response to the needs of the most vulnerable communities and grassroots organizations in targeted areas. In particular, PARC targeted marginalized rural communities in Area C of the Jordan Valley, in particular, Jiftlik, Zbeidat, Marj Na’aja, Marj Ghazal, Froush Beit Dajan and Ein Shibli, which are considered the areas most in need of projects for enhancing community cohesion and steadfastness. These areas are surrounded by nearly seven settlements, which threaten their agricultural work and livelihood, in addition to an evident systematic strategy to isolate the Jordan Valley from the rest of the Palestinian territories in order to obstruct support to its people and undermine their steadfastness.

The Jiftlik community center aims to strengthen the social fabric of communities and economically and socially empower them by initiating and facilitating means of dialogue between members of the community “rights holders”, local councils, government parties and decision-makers “duty bearers”. The goal of this is to reinforce the foundations of community citizenry, accountability and transparency, in addition to adopting an intergenerational dialogue, particularly with youth and women, to plan for the best and fairest uses of resources in these communities. The center was set up in smart halls equipped with display monitors, computers and internet so grassroots organizations, associations and local councils in the targeted locations could hold meetings with citizens.

The center is also considered a “co-working space” to enable NGO, governmental and international institutions to help support Palestinian communities in the Jordan Valley and to boost their steadfastness. The center represents an opportunity an exchange of information and coordination between institutions working in the area, to facilitate their work in the central Jordan Valley, especially since the Ministry of Local Government and several funders are leaning towards establishing Jiftlik as a major service center for the Jordan Valley.

No. of workers employed in 2024	No. of participants in community cohesion activities	No. of males	No. of females	No. of participants in training workshops	No. of males	No. of females
250	60	45	15	31	16	15
Total number of beneficiaries: 341						



2. Citizen service center – Khan Younis

In 2024, PARC, in partnership with the Palestinian NGO Network, established a Citizen Service Center in the Gaza Strip. The establishment of this center emerged as a necessity in response to the challenges created by the ongoing war throughout the year, including repeated evacuations, recurrent displacement, and the deterioration of infrastructure, which disrupted the operations of institutions working in the Gaza Strip and providing essential services to the people.

The center served as a shared space for institutions with diverse specializations, enabling them to continue delivering their services. A total of 60,724 citizens benefited from the center, which covered a wide range of services, most notably education and higher education, support for farmers and fishermen, legal and advisory services, psychosocial support, empowerment of persons with disabilities, case management, and human rights services.

The center is equipped with halls and logistical facilities designed to receive visitors and respond to their needs within the complex humanitarian conditions people are living through in Gaza during the war. It also offered emergency services to displacement camps in surrounding areas and hosted a number of events in collaboration with implementing partner organizations.

Type of service provided by the center	No. of beneficiaries
Higher education services	53,406
Support for farmers and fishermen services	2,765
Legal and advisory services	1,043
Psychosocial support services	2,405
Empowerment of persons with disabilities services	648
Case management services	215
Missing persons files and human rights services	242
Total	60,724



Fourth Program: Mobilization and Influence

Through this program, PARC aims to enhance its role in lobbying and advocating for Palestinian rights in general and farmers' rights in particular, through bolstering the capabilities of the association's employees in the field of mobilization, influence and advocacy on Palestinian issues at the local and international levels. It also aims to improve local legislation and policies and enhance their cohesion with principles of good governance and human rights on the one hand, and shedding light on Israeli occupation violations such as killing, destruction, displacement, settlement expansion and the restriction of freedoms and restrictions on movement between the various Palestinian communities. These efforts are designed to contribute to achieving the program's objective.

Throughout 2024, PARC carried out activities and interventions through its multiple projects that revolved around fostering community participation and the values of citizenship and accountability. They also focused on strengthening the role of marginalized community sectors, particularly youth and women in monitoring the performance of public institutions and creating platforms for dialogue with international partners to shed light on Israeli violations against Palestinian farmers.

In the framework of advancing towards the program's objective, a number of results were identified to serve as the general framework through which PARC operates. These include contributing to promoting the values of citizenship and accountability; strengthening PARC's role in advocating for farmers' rights and influencing decision-makers; enhancing its capacity in coalition building and activating unions and associations; and strengthening its role in pressuring the international community to hold the Israeli occupation accountable.

To achieve these objectives, PARC worked throughout 2024, through its volunteers and community protection committees, to raise awareness among targeted groups on the importance of accountability and the promotion of the values of citizenship based on rights and duties. This was achieved by organizing public meetings that brought together citizens and representatives of village and municipal councils, as well as holding dialogue sessions between activists, youth, women, and decision-makers regarding national policies and laws. PARC also documented the violations faced by farmers in the West Bank and Gaza Strip, producing factsheets that detailed the nature and forms of these violations across various areas.

Additionally, it published a report monitoring the extent of losses suffered by the agricultural sector during the assault on Gaza, and produced position papers, statements, and warnings documenting these violations and their socioeconomic impacts, which were shared with international partners, embassies, and consulates in Palestine. It also held briefings during numerous sessions with international stakeholders and field visits to expose Israeli violations and policies affecting the agricultural sector in Palestine.



PARC also strengthened its engagement in local coalitions advocating for the rights of farmers and rural communities. It contributed to the establishment of the Palestinian Agricultural Institutions Coalition through two programs, which enabled it to play an active role in policy discussions related to the agricultural sector and to advance advocacy activities addressing the challenges and measures imposed by the occupation. PARC further strengthened its role within the Palestinian NGO Network by playing a crucial role in providing and sharing vital information on the agricultural sector with both local and international partners, along with reports and statistics illustrating the extent of the sector's impact from the war on Gaza and the concurrent escalation in the West Bank.

At the international and regional levels, PARC participated in platforms such as the Arab Land Initiative, considered an important space to highlight the main challenges facing Palestinian land and farmers, as well as in UN platforms like OCHA and the INGO network in Palestine. These are considered among the most significant platforms for amplifying voices in defense of Palestinian rights. Moreover, through its network of donors, international partners, and human rights defenders, PARC contributed to the issuance of joint statements, disseminating them across international media outlets with significant influence on political decision-making. It produced a report on explosive remnants from the Israeli occupation and their violation of Palestinians' right to life, in partnership with the Danish Refugee Council.

Strategic objective: Improving PARCs performance and efficiency, maximizing its outputs and maintain its sustainability and excellence

Fifth program: institutional development

Based on its belief that it takes continuous hard work to reach advanced levels of development and building, since the human element is the fundamental cornerstone to the building process, PARC has always placed great importance on developing and motivating its human capita within the association. This is in spite of the difficult circumstances resulting from the war on the Gaza Strip in the last quarter of 2023, the impacts of which are still being felt to this day. However, we continued to develop and care for our staff throughout 2024.

PARC employees played a key role throughout the aggression on the Gaza Strip, in regards to supporting Palestinian farmers, marketing their products locally, sterilizing public places and distributing aid to local communities. They contributed through cooperation, support, and flexibility, in carrying out implementation procedures. They also took an active role in distributing food parcels and necessities to affected families in the Strip. In addition, they stood by PARC team members impacted by the war in Gaza, offering financial and moral support, especially to those who lost their homes or had family members killed or injured.



Interventions to develop PARC's performance

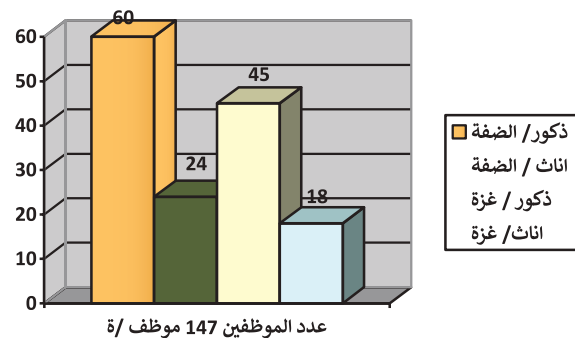
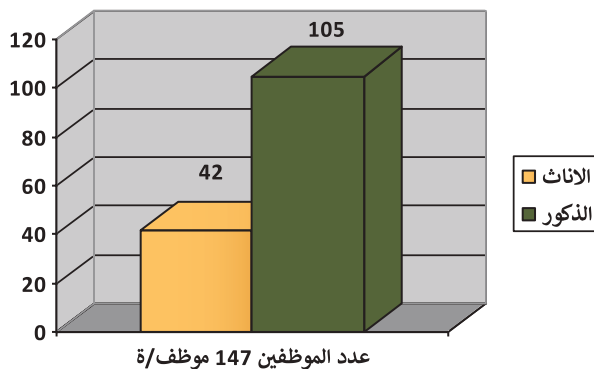
1. Promoting the introduction of computerized and electronic systems and the implementation of modern technologies:

PARC continued its efforts in developing the human resources e-system, with several components within the portal activated. The system has become more user-friendly and efficient, enabling staff to easily access required information. In addition, a review of submitted proposals was conducted to explore the possibility of linking the programs, projects, and finance systems with human resources, to facilitate communication between departments, reduce time and effort, and ensure better results and more accurate information. Furthermore, a set of key reports was developed to measure the core outputs of the adopted system.

2. Recruiting and attracting experts in the multiple fields in which PARC works:

By the end of 2024, there were 147 employees at PARC, with females comprising 27% of the staff. The association made exerted efforts to achieve gender balance in spite of certain obstacles in the employment process due to the intense competition between qualified employees and a shortage of qualified female agricultural engineers.

The human resources department increased the quantity and the qualifications of staff to fill existing positions and establish new departments that enhance the association's quality and development. In this context, the functions of the advocacy, lobbying, and media department were revived, and its team increased. Additionally, new programs were introduced to advance PARC's objectives and strategic goals, including the humanitarian response and emergency management program, the economic and social empowerment program, the natural resources program, and, finally, the environmental water program.



3. Training and skills and capacity building of employees:

Several colleagues participated in a number of online and in-person training courses, with the contribution of funding parties, including OXFAM, Luxemburg, the Spanish Fund and other donors. They also participated in several educational, cultural and awareness-raising workshops in all parts of the homeland and locally and internationally, including:

21st Century skills	4
Gender and Environment – PAIC	5
Project Management Professional	1
Report Writing	2
Principles and skills of arbitration management	1
Project Management Professional	1

Also throughout 2024, PARC worked on renovating their offices and branches in all districts. A new office was opened in Jiftlik and furnished with office equipment, a reception hall and furniture, to serve the targeted sectors in the Jordan Valley region. The Zababdeh center was also renovated with a lab, display screens and modern equipment.



The theory of change in which PARC believes:

PARC believes that change is on the empowerment of marginalized social sectors, in particular farmers, women and youth in rural communities, through improving their capabilities and skills and organizing them within a regulatory framework that represents their interests. This also includes providing means of connecting them to local and external markets through developing national policies and laws that enable individuals to equally access opportunities and funding sources. This, in turn, creates an empowered society, capable of accessing decent and sustainable livelihoods governed by the values of justice and accountability, and a growing agricultural sector that contributes to elevating the national economy and local growth.

Sustainable development goals and their relevance to PARC interventions:

The Sustainable Development Goals (SDGs) represent a milestone toward achieving a better and more sustainable future for all. These goals address global challenges, including poverty, inequality, climate change, environmental degradation, prosperity, peace and justice. Given their interconnected goals, and to ensure that no one is left behind, UN organizations aspire to achieve all of these goals by 2030.

Within this framework, and as part of its contribution to advancing sustainable development in Palestine, PARC's interventions intersect with the following development goals:

Goal 1: Ending poverty.

Goal 2: Zero hunger.

Goal 5: Promoting gender equality and combating discrimination.

Goal 8: Decent work and economic growth through the adoption of renewable energy practices and the promotion of green, cooperative, and solidarity-based economic models.

Goal 11: Building sustainable local communities.

Goal 13: Preserving the environment and mitigating the impacts of climate change through the expansion of green spaces.

Goal 16: Promoting peace, justice, and strong institutions.



Chapter Four



PARC's Partners in Development

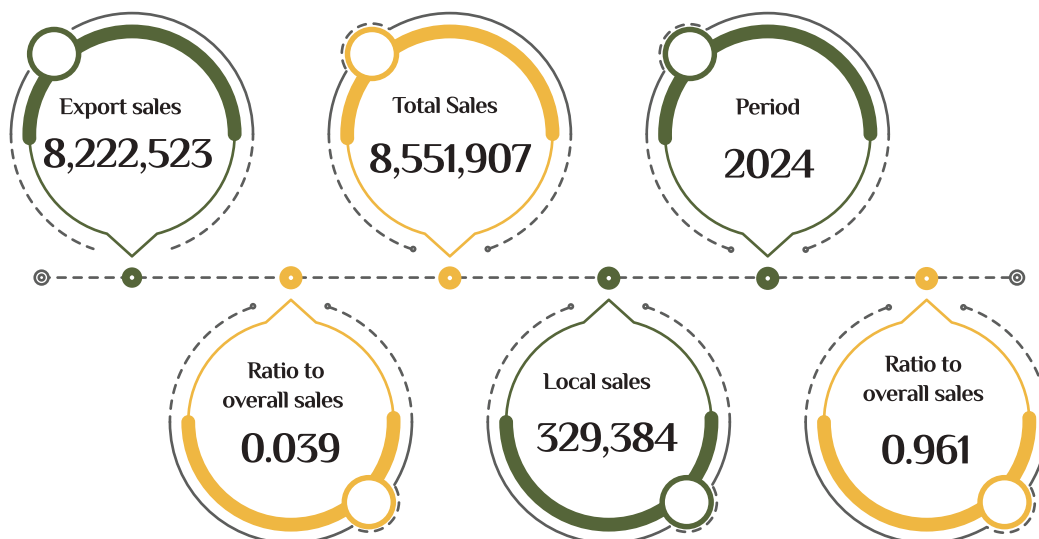
1. AI Reef Company for Agricultural Investment and Marketing

Most significant achievements in 2024:

Financial statements indicate that the company's 2024 sales rose by 76.2% compared to its 2023 sales. This is attributed to the company's Norwegian campaign, through promotional and networking visits by AI Reef's team in the past two years, to Switzerland, South Africa, South Korea and Italy. Additionally, it produced promotional films on AI Reef's activities, which were sent to external partners along with the preparation and presentation of over 11 presentations on Zoom of several meetings attended by hundreds of consumers and potential consumers, in addition to other communication activities. This was all made possible by AI Reef's professional team, whereby markets were opened to new products in Denmark, Kuwait, Switzerland and Japan.

AI Reef's 2024 business activity report:

Internal and external company sales:



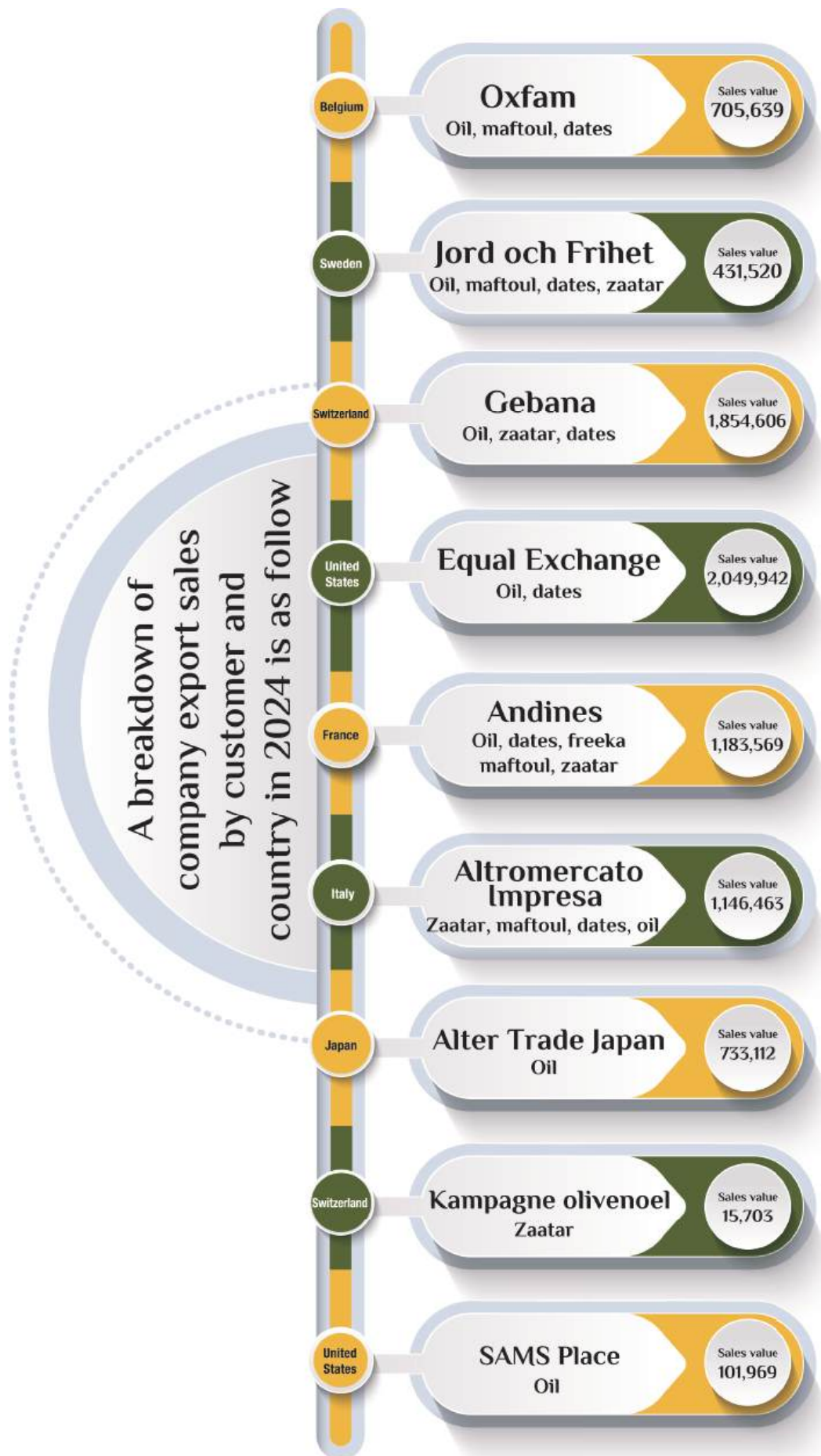
The above table shows the company's sales in 2024, divided into export sales, which accounted for 96%, and local market sales, which accounted for approximately 4%. When compared with sales in 2023, which totaled ILS4,851,237, the company recorded an increase of about 76.2% in overall sales.

In 2024, the export sales reached ILS8,222,523, representing 96.4% of total company sales, while local market sales totaled ILS329,384, accounting for 3.6% in the same year.

The company's export sales according to customer and country in 2024

Name of organization	Country	Sales value	Categories
Oxfam	Belgium	705,639	Oil, maftoul, dates
Jord och Frihet	Sweden	431,520	Oil, maftoul, dates, zaatar
Gebana	Switzerland	1,854,606	Oil, zaatar, dates
Equal Exchange	United States	2,049,942	Oil, dates
Andines	France	1,183,569	Oil, dates, freeka, maftoul, zaatar
Altromercato Impresa	Italy	1,146,463	Zaatar, maftoul, dates, oil
Alter Trade Japan	Japan	733,112	Oil
Kampagne olivenoel	Switzerland	15,703	Zaatar
SAMS Place	United States	101,969	Oil
Total in ILS		8,222,523	





2.Reef Company for Small Funding Services, 2024

Reef Company for Small Funding Services is a Palestinian private shareholding, non-profit company established in 2007 and registered with the Ministry of National Economy. The company began its actual operations in early 2008 by providing agricultural loans. Its work is primarily concentrated in Palestinian rural areas, where it offers financial services to various segments of society and to small-scale projects, particularly targeting poor and low-income young male and female farmers. In addition, it extends its services to diverse commercial and financial sectors and to both genders equally. The company adopts both in-kind and cash lending programs as part of its financing operations.

2024 was marked by significant events that impacted the financial and administrative situation of all financial and banking institutions, as well as the overall economic conditions across the Palestinian territories in both the West Bank and the Gaza Strip. By the end of the year, the active portfolio amounted to \$14,663,227, for a total of 3,102 beneficiaries. Despite the difficult circumstances, the company succeeded in amassing \$2,815,543 and disbursed a single agricultural loan amounting to \$7,000. This resulted in a decrease in the active portfolio by \$2,116,803 (13%) and the closure of 212 loans (6%). Furthermore, the portfolio at risk ratio increased from 5.59% at the end of 2023 to 9.66% at the end of 2024, or a rise of 4.07%. Furthermore, allocations increased significantly due to the heightened risks, with an additional \$464,862 (3.96%) allocated, which in turn led to a decline in shareholder equity by \$233,710.

Reef Company and other institutions operating in this sector play a pivotal role in promoting sustainable economic development, financial inclusion, and in maintaining both financial and social stability in Palestine. This is achieved through their continuous and diligent efforts to reach the widest possible segments of society, particularly poor and marginalized groups, in order to empower them, assist them in securing job opportunities, and providing the necessary financing to sustain their businesses and activities.

The company has never wavered in its commitment to its humanitarian, ethical, and national duty, undertaking all necessary measures to alleviate the suffering of its people. In this regard, there were several other significant and noteworthy achievements, including the following:

- Mobilization of €5,000 from Etica Bank as a contribution to covering the company's operational costs, in addition to approximately €15,000 to settle impacted loans in the West Bank.

- Securing \$5,500 through the Daman Joint Stock Company to contribute to the company's operational costs in the Gaza Strip.



■ Contribution from the Delta Company (responsible for maintaining the core software) in the amount of \$14,000, of which \$10,000 was directed to Gaza with no conditions attached.

■ The company was compensated with the amount of \$130,000 received from the loan guarantee company to cover non-performing loans, the majority of which were concentrated in the Gaza Strip.

■ The company implemented strict expenditure control measures and intensified loan collection efforts to secure the liquidity required for continued operations and to mitigate risks of cash shortages amid the prevailing political, security, and economic conditions in both the West Bank and Gaza Strip.

■ Within the context of easing circumstances for our people in Gaza and the West Bank and in line with instructions from the Palestinian Monetary Authority, loan installments and financing in Gaza were deferred without the addition of interest or commissions. Furthermore, installments for certain beneficiaries in the West Bank were also postponed, depending on their circumstances and income disruptions.

■ Relationships with partners, supporters, and funders from local and international institutions, organizations, and banks were strengthened, to ensure continued cooperation so the company can continue providing microfinance services to Palestinian society.

■ A company delegation participated in a visit to Italy through Etica Bank under the “Ibtikar [Innovation] Project,” which contributed to fostering relationships with funders and partners while also building the capacities of the participating team.

■ Development of the company’s staff capacities, recognizing that employees are the company’s core human capital, through participation in essential training programs designed to improve their performance in providing services to Reef’s beneficiaries.

■ Reaching agreements with Oxfam and the Palestinian Employment Fund to secure an interest-free loan of \$500,000 from the Fund. Under this arrangement, an amount of \$819,000 will be disbursed to farmers at zero interest, while the company will be compensated with €104,000 to cover administrative expenses and financing risks. Additionally, Oxfam will provide a loan guarantee of approximately €300,000.



Obstacles and challenges

- The continued Israeli aggression on the Gaza Strip
- The brutal attack on Area C of the West Bank
- Scarcity of resources and their interruption for a period of time in the Gaza Strip
- Competition over human resources in international organizations.
- Increased burden on the emergency committee in the West Bank
- Difficulty in operating mechanism in Area C, which resulted in a hike in prices and the failure of certain activities.
- The shortage of government resources increased pressure on PARC in meeting needs.
- Overcrowding of employees at the main center
- The focus of partners and donors on certain areas, which negatively impacts the distribution of projects among the branches.
- Weak infrastructure in some areas, namely the marginalized ones, which hinders the ability to carry out certain interventions within the specific timeline.
- Accelerating climate change and fluctuations and their impact on the agricultural sector's productivity.
- Restrictions and closures imposed on Palestinian areas and fragmentation of local communities.
- Inflation and increased costs of services provided to local communities, which led to increased prices of goods, services, and interventions provided by PARC.

Conclusion and recommendations

In 2024, PARC focused on strengthening the steadfastness of the most affected segments in marginalized areas, especially in the Gaza Strip, which is facing tremendous challenges due to the ongoing aggression. What complicated the situation even more has been the ongoing blockade on the entry of aid, thus further compounding the humanitarian situation there. Meanwhile, Israeli occupation forces and settlers continued committing violations in the West Bank, including raids, destruction, vandalism, the arson of properties and siege on Palestinian villages and cities.

Through its program and project interventions, which continued in spite of the challenges, PARC was able to play a fundamental and pivotal role in emergency response programs in the Gaza Strip and West Bank. It also continued with its development interventions aimed at promoting steadfastness in rural Palestinian communities and enabling people there to invest in the agricultural sector. This was possible through grants, training and developing an enabling environment for agricultural projects and enterprises, thereby contributing to the improvement of food security and supporting beneficiary families in light of the difficult economic challenges.



Recommendations

- Strengthen PARC's role in contributing to the development of the national recovery plan for the agricultural sector in Gaza, drawing on the institution's extensive experience in agricultural development.
- Develop an emergency plan to address potential political risks in Palestine, and the resulting challenges that hinder the association's access to target areas and farmers.
- Bolster staff capacities and improve the logistical requirements of branch offices across the West Bank and Gaza, enabling them to operate with minimal centralization in light of challenges imposed by the occupation.
- Contribute to the development of support programs for small and medium-sized agricultural projects by establishing a support fund designed to address economic difficulties such as movement restrictions and the transport of goods, marketing obstacles, and access to agricultural inputs.
- Promote PARC's contribution to localizing sound agricultural practices through developing awareness programs aimed at building farmers' knowledge, skills, and capacities in this regard.
- Expand PARC's expertise in transferring knowledge and skills related to modern agricultural technologies, in order to improve efficiency, increase productivity, and create job opportunities in the agricultural sector.
- Update training and capacity-building programs related to agriculture, with a focus on entrepreneurship and the green economy, particularly targeting youth and women to facilitate their integration into the agricultural labor market, to improve profitability and financial returns from agricultural projects.
- Strengthen local partnerships with the private and public sectors in developing agricultural infrastructure within an integrated plan that prioritizes key development areas and priority target locations.
- Mobilize resources to strengthen PARC's capacity in building local and international alliances, organizing farmers and agricultural workers within representative frameworks and unions, and empowering them to defend their rights and response to their demands.
- Continue strengthening PARC's capacity in international advocacy and lobbying for Palestinian farmers' rights by mobilizing resources to create international and regional platforms capable of pressuring and holding the occupation accountable for its measures against the Palestinians.
- Enhance PARC's role in shaping agricultural and environmental policies and legislation on the agricultural and environmental sector, through dialogue with the Palestinian government, particularly the Ministry of Agriculture, and by mobilizing farmers to ensure their demands and basic services required to create an enabling environment for developing the agricultural sector in Palestine, are met.



- Expand support to include more agricultural and livestock projects in affected areas, given the growing economic challenges.
- Improve governance and coordination of programs and projects with local partners to ensure efficient implementation of interventions, maintain their sustainability, fairness, and equitable benefit distribution among local communities from the various projects and programs.
- Increase funding for emergency programs in Gaza and the West Bank to ensure effective and sustainable responses to ongoing crises.
- Strengthen partnerships with international and local organizations to expand support and maximize the impact on beneficiary communities.
- Develop training and capacity-building programs for beneficiaries to ensure project sustainability and improve agricultural productivity.
- Conduct periodic evaluations of project impact to ensure achievement of goals and maximize the use of available resources.

